



**Application Notes for Configuring Sennheiser Communications A/S BTD 800 USB Dongle, HeadSetup software and MB Pro Series Headsets with Avaya one-X® Agent - Issue 1.0**

**Abstract**

These Application Notes describe the configuration steps required to integrate the Sennheiser Communications A/S BTD 800 USB Dongle, HeadSetup software and MB Pro Series Headsets with Avaya one-X® Agent. The HeadSetup is a collection of programs that enable remote call control with Sennheiser headsets and Avaya one-X® Agent. With Sennheiser MB Pro Series Headsets connected via Bluetooth BTD 800 USB dongle on a PC, users can answer, end, mute/unmute, hold/resume and adjust volume using buttons on the MB Pro Series Headsets device.

Readers should pay attention to **Section 2**, in particular the scope of testing as outlined in **Section 2.1** as well as any observations noted in **Section 2.2**, to ensure that their own use cases are adequately covered by this scope and results.

Information in these Application Notes has been obtained through DevConnect compliance testing and additional technical discussions. Testing was conducted via the DevConnect Program at the Avaya Solution and Interoperability Test Lab.

## 1. Introduction

The Sennheiser Communications A/S MB Pro Series Headsets together with HeadSetup software allow connection and call control with Avaya one-X® Agent via Bluetooth BTD 800 USB dongle on a PC. The HeadSetup is a collection of programs that enable remote call control with MB Pro Series Headsets and Avaya one-X® Agent. With Sennheiser MB Pro Series Headsets, users can answer, end, mute/unmute, hold/resume and adjust volume using buttons on the MB Pro Series Headsets device.

## 2. General Test Approach and Test Results

DevConnect Compliance Testing is conducted jointly by Avaya and DevConnect members. The jointly-defined test plan focuses on exercising APIs and/or standards-based interfaces pertinent to the interoperability of the tested products and their functionalities. DevConnect Compliance Testing is not intended to substitute full product performance or feature testing performed by DevConnect members, nor is it to be construed as an endorsement by Avaya of the suitability or completeness of a DevConnect member's solution.

Avaya's formal testing and Declaration of Conformity is provided only on the headsets/handsets that carry the Avaya brand or logo. Avaya may conduct testing of non-Avaya headset/handset to determine interoperability with Avaya phones. However, Avaya does not conduct the testing of non-Avaya headsets/handsets for: Acoustic Pressure, Safety, Hearing Aid Compliance, EMC regulations, or any other tests to ensure conformity with safety, audio quality, long-term reliability or any regulation requirements. As a result, Avaya makes no representations whether a particular non-Avaya headset will work with Avaya's telephones or with a different generation of the same Avaya telephone.

Since there is no industry standard for handset interfaces, different manufacturers utilize different handset/headset interfaces with their telephones. Therefore, any claim made by a headset vendor that its product is compatible with Avaya telephones does not equate to a guarantee that the headset will provide adequate safety protection or audio quality.

The interoperability compliance test included feature and serviceability testing. The feature testing focused on placing calls with Avaya one-X® Agent, answering and ending calls using the call control button on the headset, and verifying two-way audio. The call types included calls to voicemail, local extensions, and the PSTN.

The serviceability testing focused on verifying the usability of the Sennheiser headset solution after restarting the Avaya one-X® Agent, restarting the PC, moving a distance away from PC to lose Bluetooth connectivity and reconnecting the headset to the PC.

## 2.1. Interoperability Compliance Testing

All test cases were performed manually. The following features were verified:

- Placing calls to the voicemail system. Voice messages were recorded and played back to verify that the playback volume and recording level were good.
- Placing calls to/from internal extensions to verify two-way audio.
- Placing calls to/from the PSTN to verify two-way audio.
- Answering and ending calls using the call control button on the headset and the soft button on one-X Agent.
- Using the soft button on one-X Agent and the call control button on the headset to hold and un-hold the audio.
- Using the volume control buttons on the headset to adjust the audio volume.
- Using the voice control button on the headset and the soft button on one-X Agent to mute and un-mute the audio.
- Using the call control button on the headset to reject or redial a call.
- Verifying incoming call notification on headset.
- Verifying call ended notification on headset.

The serviceability testing focused on verifying the usability of the Sennheiser headset solution after restarting the one-X Agent, moving a distance away from PC to lose Bluetooth connectivity and restarting the PC and reconnecting the headset to the PC.

## 2.2. Test Results

Redial and Reject features of the Sennheiser device are not supported as Avaya headset API does not provide this functionality. All other test cases are successfully completed.

## 2.3. Support

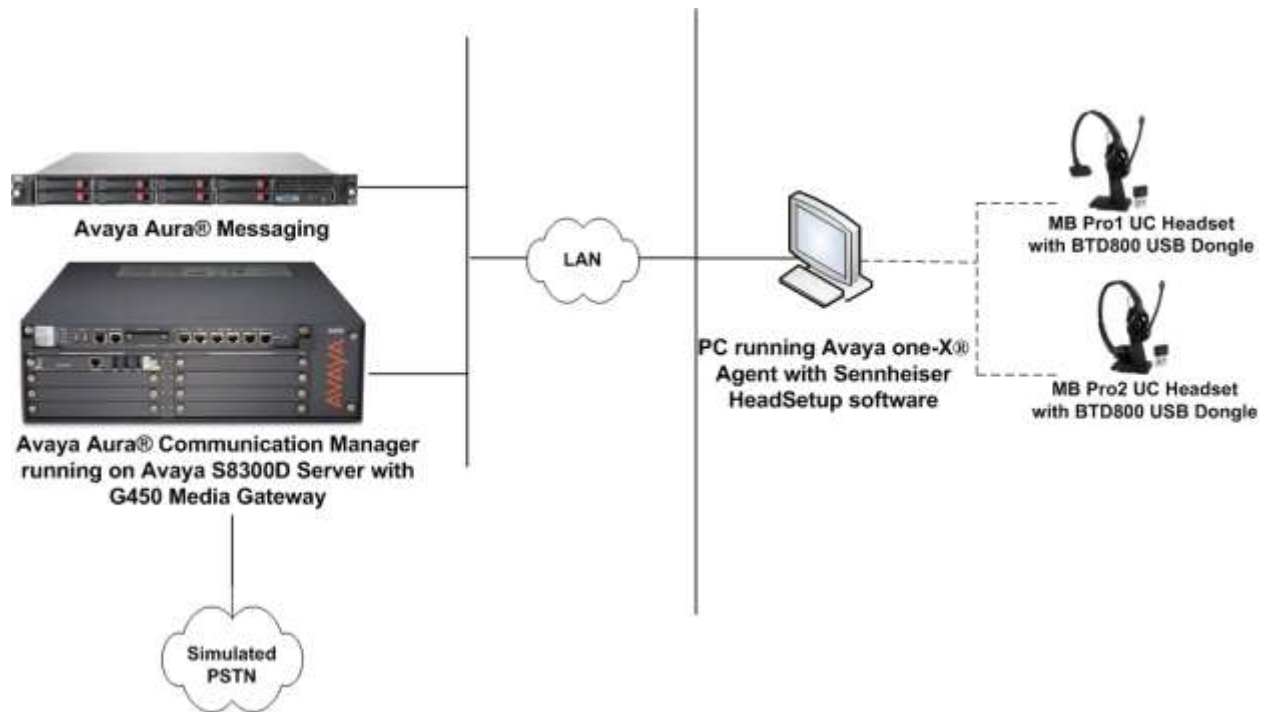
For support on the Sennheiser Communications A/S headset solution, contact Sennheiser Communications A/S technical support at:

Website: <http://en-de.sennheiser.com/service-support/>

Phone: +1-860-434-9190

### 3. Reference Configuration

**Figure 1** illustrates the test configuration used to verify Sennheiser HeadSetup software with Bluetooth BTD 800 and MB Pro Series Headsets solution. The configuration consists of an Avaya S8300D Server running Avaya Aura® Communication Manager with an Avaya G450 Media Gateway providing connectivity to a simulated PSTN via an ISDN-PRI trunk. Avaya Aura® Messaging was used as the voicemail system. The Sennheiser HeadSetup software was installed on the PC. The MB Pro Series headsets are connected via the Bluetooth BTD 800 plugged into the USB interface on the PC.



**Figure 1: Test Configuration**

## 4. Equipment and Software Validated

The following equipment and software were used for the sample configuration provided.

<b>Equipment/Software</b>	<b>Release/Version</b>
Avaya Aura® Communication Manager running Avaya S8300D Server with a G450 Media Gateway	6.3.12.0 (Build R016x.03.0.124.0-22505)
Avaya Aura® Messaging	6.3.3 (6.3.124.321-1.253373)
one-X® Agent running on Windows 7 Professional Service Pack 1	6.2.5.03 (6.2 SP5)
Sennheiser HeadSetup software	V5.1.0
Sennheiser MB Pro1 UC headset	1.1.3.0
Sennheiser MB Pro 2 UC headset	1.1.3.0
BTD 800 Bluetooth dongle	1.1.3.0

## 5. Configure Avaya Aura® Communication Manager

This section covers the station configuration for Avaya one-X® Agent. The configuration is performed via the System Access Terminal (SAT) on Communication Manager.

Use the **add station** command to create a station for Avaya one-X® Agent. Set the **Type** field to the station type to be emulated. In this example, *9641G* was used. Set the **Port** field to *IP* and configure a **Security Code**, which will be used as the password by Avaya one-X® Agent to log in. Set the **IP Softphone** field to *y*.

```

add station 10003                                     Page 1 of 5
                                                    STATION
Extension: 10003                                     Lock Messages? n          BCC: 0
Type: 9641G                                         Security Code: 111222    TN: 1
Port: S00005                                       Coverage Path 1:         COR: 1
Name: one-X Agent                                   Coverage Path 2:         COS: 1
                                                    Hunt-to Station:        Tests? y

STATION OPTIONS
Location:                                           Time of Day Lock Table:
Loss Group: 19                                     Personalized Ringing Pattern: 1
                                                    Message Lamp Ext: 10003
Speakerphone: 2-way                               Mute Button Enabled? y
Display Language: english                         Button Modules: 0
Survivable GK Node Name:                          Media Complex Ext:
Survivable COR: internal                           IP SoftPhone? y
Survivable Trunk Dest? y

                                                    IP Video Softphone? n
Short/Prefixed Registration Allowed: default

                                                    Customizable Labels? y

```

On **Page 4** of the Station form, configure the additional feature buttons shown in bold, which are used by Avaya one-X® Agent to log in as an Automatic Call Distribution (ACD) agent. Illustrated below is button 5 for Agent Login and button 6 for Agent Logout.

```


add station 10003                                     Page 4 of 5
                                                    STATION
SITE DATA
Room:                                               Headset? n
Jack:                                              Speaker? n
Cable:                                             Mounting: d
Floor:                                             Cord Length: 0
Building:                                         Set Color:

ABBREVIATED DIALING
List1: system                                     List2:                    List3:

BUTTON ASSIGNMENTS
1: call-appr                                     5: abrv-dial List: 1 DC: 01
2: call-appr                                     6: abrv-dial List: 1 DC: 02
3: call-appr                                     7: auto-in      Grp:
4:                                               8: aux-work    RC:      Grp:
voice-mail 10000

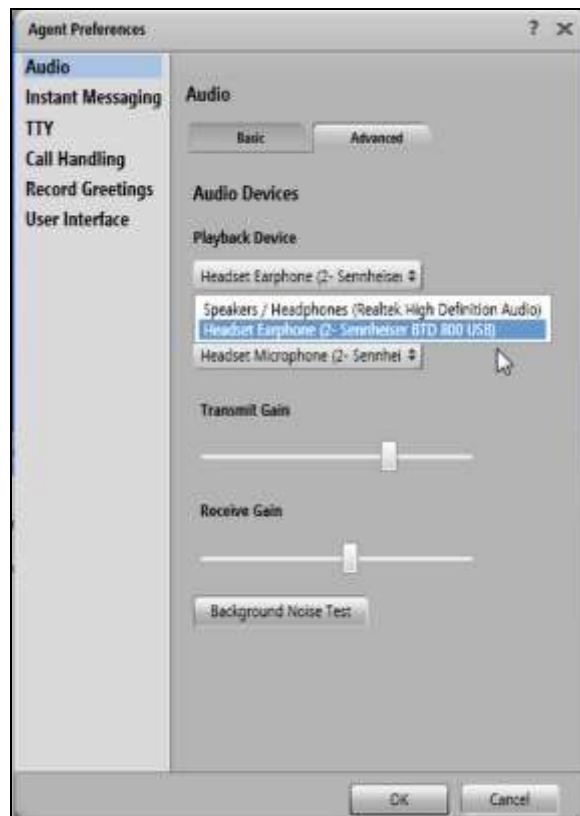
```

## 6. Configure Avaya one-X® Agent

Before configuring the Avaya one-X® Agent, the headset has to be configured and provisioned as in **Section 7** first. After logging into Avaya one-X® Agent , click on  and then select **Agent Preferences** as shown below.



In the **Agent Preferences** window, click on **Audio** and then select the **Advanced** tab as shown below. Select the **Playback Device** and **Record Device** fields to *Headset Earphone (2-Sennheiser BTD 800 USB)*. Click **OK**



## 7. Configure Sennheiser MB Pro Series Headsets solution

This section covers the steps to integrate Sennheiser headsets with one-X® Agent, including:

- Installing the Sennheiser HeadSetup software
- Configuring HeadSetup software
- Connecting Sennheiser MB Pro Series Headsets

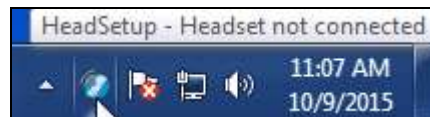
**Note:** After successfully performing this procedure, the headset will be detected in Avaya one-X® Agent as described in **Section 0**.

### 7.1. Installing the Sennheiser HeadSetup software

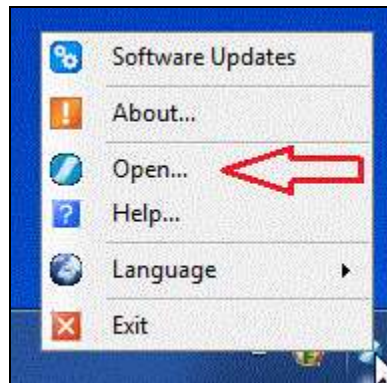
The installation instructions for Sennheiser HeadSetup software on the Avaya one-X® Agent PC is described in [5] listed in **Section 10**.

### 7.2. Configuring HeadSetup software

Launch the **HeadSetup** icon from the desktop. Hover mouse over the HeadSetup icon on bottom right taskbar and that it shows “**HeadSetup – Headset not connected**”.

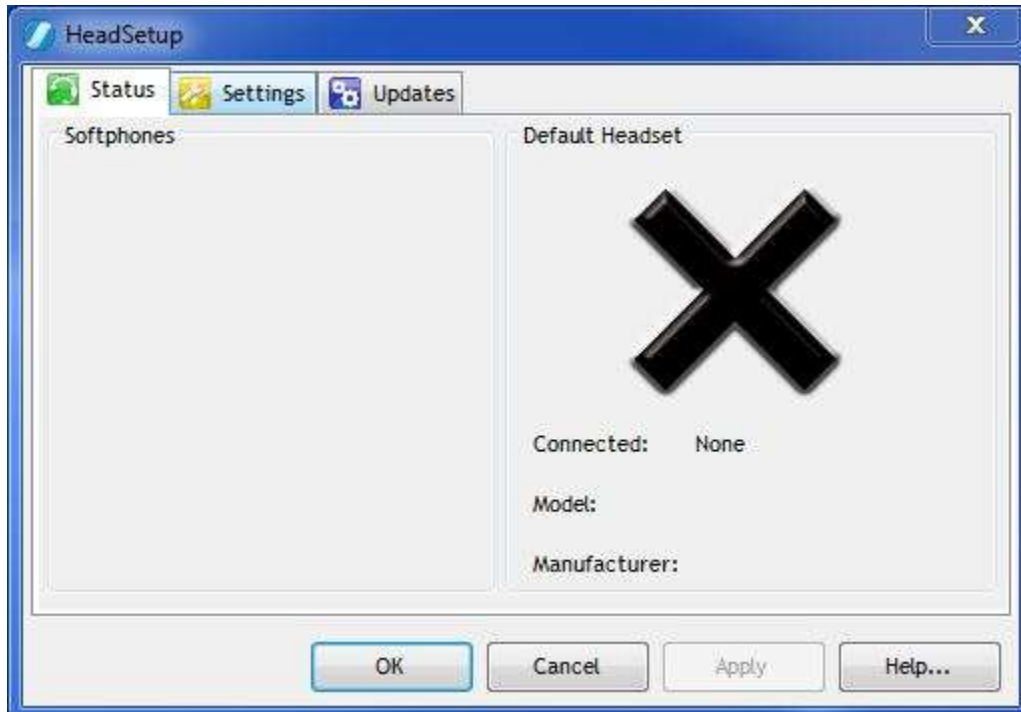


**Right Click** on the HeadSetup application icon at the bottom right taskbar and select **Open**.





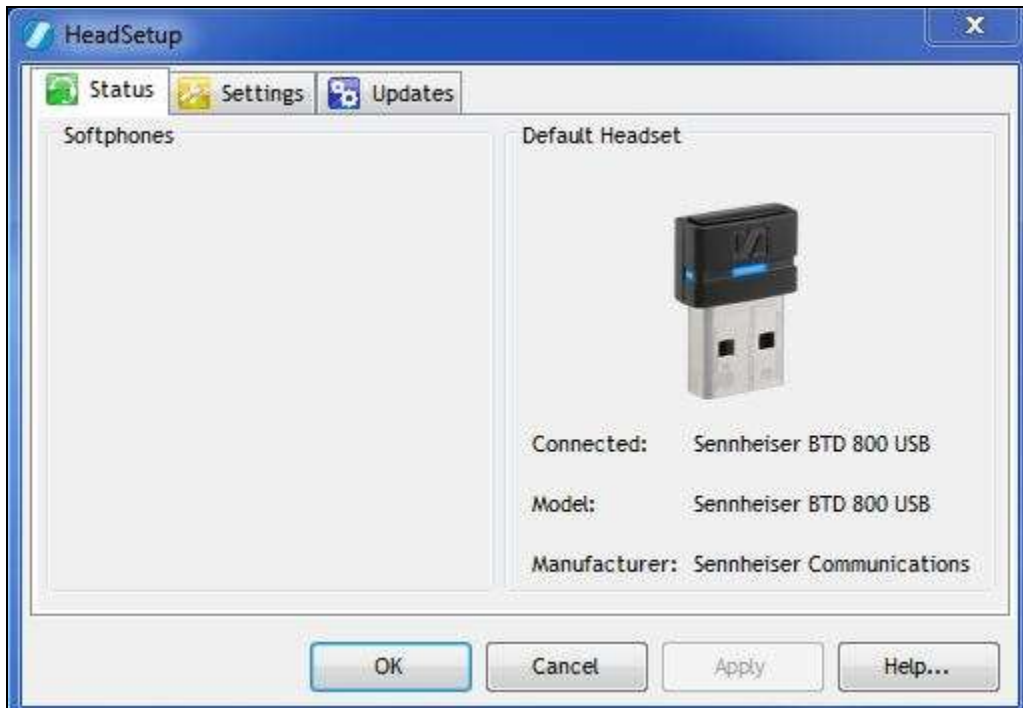
Select the **Status** tab and **Default Headset** on the right pane shows no headset is detected with an **X**.



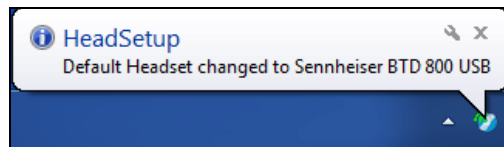
### 7.3. Connecting Sennheiser MB Pro Series Headsets

Plug Sennheiser BTD 800 Bluetooth dongle into USB port of PC. The device drivers will automatically be installed once plugged into the PC. For setting up the MB Pro Series Headsets Bluetooth connection to Bluetooth dongle, refer to [6].

The HeadSetup software **Status tab** shows the **Sennheiser BTD 800 USB** is detected.



The HeadSetup icon on bottom right taskbar shows “**Default Headset changed to Sennheiser BTD 800 USB**”.



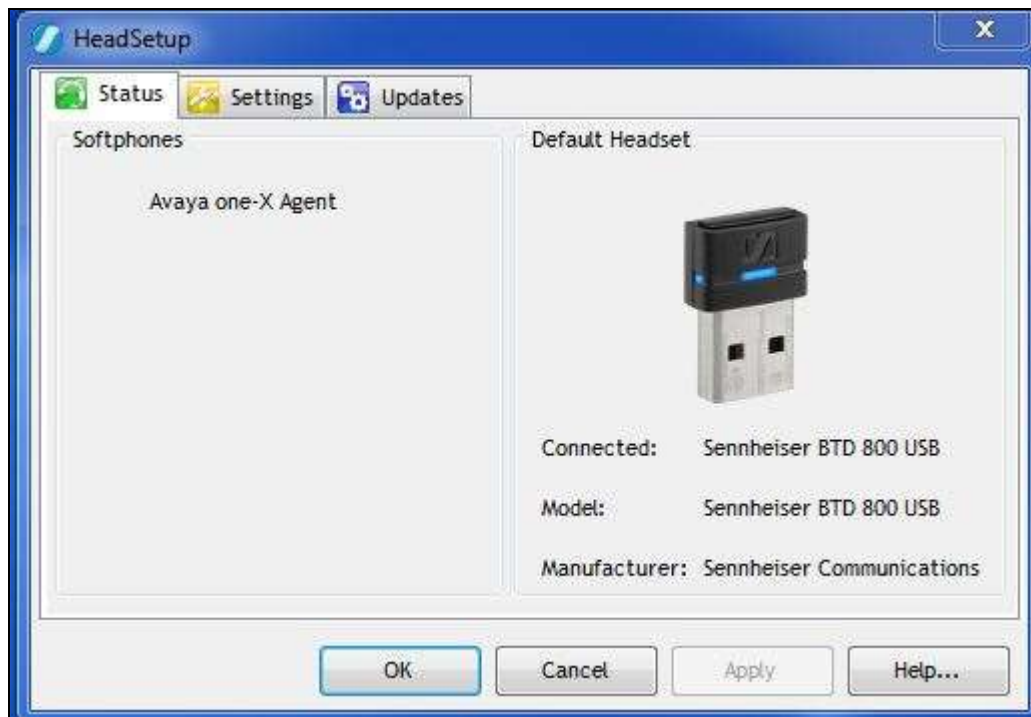
Hover mouse over the HeadSetup icon (in grey) on bottom right taskbar and it shows “**HeadSetup – Not logged to any soft-phone**”.



## 8. Verification Steps

This section verifies that the headset solution has been successfully integrated with the Avaya one-X® Agent. Launch and log in to the Avaya one-X® Agent.

1. Verify that the Sennheiser headset has been successfully connected for use with the Avaya one-X® Agent. From the **HeadSetup** program, select the **Status** tab. Verify that:
  - The **Softphones** on the left pane shows **Avaya one-X Agent**.
  - The **Default Headset** on the right pane shows the **Sennheiser BTD 800 USB**.



2. Hover mouse over the HeadSetup icon (in green) on the bottom right taskbar and it shows “HeadSetup – Headset Idle”.



3. Once the headset is connected to Avaya one-X® Agent; verify that incoming and outgoing calls can be established with two-way audio to the headset. Hover mouse over the HeadSetup icon on bottom right taskbar and it shows “**HeadSetup – Headset in use**”. If the headset call control buttons is not functioning, restart the connection by closing and opening the HeadSetup application; check that the correct Playback and Record Device is selected for one-X® Agent in **Section 6**.



4. For incoming calls, answer the call by pressing the call control button on the headset.
5. End the call by pressing the call control button on the headset.

## 9. Conclusion

These Application Notes describe the configuration steps required to integrate Sennheiser Communications A/S BTD 800 USB Dongle, HeadSetup software and MB Pro Series Headsets with Avaya one-X® Agent. All test cases were completed successfully with observations noted in **Section Error! Reference source not found.**

## 10. Additional References

This section references the Avaya and Sennheiser Communications A/S documentation that are relevant to these Application Notes.

The following Avaya product documentation can be found at <http://support.avaya.com>.

- [1] *Administering Avaya Aura® Communication Manager*, Release 6.3, Issue 10.0, Aug 2015, Document Number 03-300509.
- [2] *Administering Avaya one-X® Agent*, Release 2.5.4 (H.323), December 2013.
- [3] *Installing Avaya one-X® Agent*, Release 2.5.4 (H.323), December 2013.

The following Sennheiser Communications A/S documentation can be found at <http://en-de.sennheiser.com/>.

- [4] *Sennheiser Updater – Mass Deployment Installation Guide*.
- [5] *Sennheiser MB Pro 1 Pro 2 user manual*.
- [6] *Sennheiser MB Pro 1 Pro 2 quick guide*.

---

**©2015 Avaya Inc. All Rights Reserved.**

Avaya and the Avaya Logo are trademarks of Avaya Inc. All trademarks identified by ® and ™ are registered trademarks or trademarks, respectively, of Avaya Inc. All other trademarks are the property of their respective owners. The information provided in these Application Notes is subject to change without notice. The configurations, technical data, and recommendations provided in these Application Notes are believed to be accurate and dependable, but are presented without express or implied warranty. Users are responsible for their application of any products specified in these Application Notes.

Please e-mail any questions or comments pertaining to these Application Notes along with the full title name and filename, located in the lower right corner, directly to the Avaya DevConnect Program at [devconnect@avaya.com](mailto:devconnect@avaya.com).