



Application Notes for configuring Ascom Wifi Myco Smartphones with Avaya Communication Server 1000 Release 7.6 – Issue 1.0

Abstract

These Application Notes describe a solution comprised of Ascom Wifi Myco smartphones with Avaya Communication Server 1000 7.6. During the compliance testing, the Ascom Wifi Myco smartphone registered as a SIP endpoint with Communication Server 1000 SIP Line gateway. The Ascom Wifi Myco smartphone made and received calls. The compliance testing focused on basic telephone features.

Readers should pay attention to **Section 2**, in particular the scope of testing as outlined in **Section 2.1** as well as any observations noted in **Section 2.2**, to ensure that their own use cases are adequately covered by this scope and results.

Information in these Application Notes has been obtained through DevConnect compliance testing and additional technical discussions. Testing was conducted via the DevConnect Program at the Avaya Solution and Interoperability Test Lab.

1. Introduction

These application notes provide detail configurations of Avaya Communication Server 1000 7.6 (Communication Server 1000) and the Ascom Wifi Myco smartphones (Myco) used during the compliance testing. Myco registered with the SIP Line Gateway (SLG) application on the Communication Server 1000.

2. General Test Approach and Test Results

The general test approach was to have the Myco to register to the Communication Server 1000. Calls were then placed from other Communication Server 1000 telephone clients/users to and from the Myco. Other telephony features such as busy, hold, Transfer, Conference, Call Forward, DTMF and codec negotiation were also verified.

DevConnect Compliance Testing is conducted jointly by Avaya and DevConnect members. The jointly-defined test plan focuses on exercising APIs and/or standards-based interfaces pertinent to the interoperability of the tested products and their functionalities. DevConnect Compliance Testing is not intended to substitute full product performance or feature testing performed by DevConnect members, nor is it to be construed as an endorsement by Avaya of the suitability or completeness of a DevConnect member's solution.

Avaya's formal testing and Declaration of Conformity is provided only on the headsets/handsets that carry the Avaya brand or logo. Avaya may conduct testing of non-Avaya headset/handset to determine interoperability with Avaya phones. However, Avaya does not conduct the testing of non-Avaya headsets/handsets for: Acoustic Pressure, Safety, Hearing Aid Compliance, EMC regulations, or any other tests to ensure conformity with safety, audio quality, long-term reliability or any regulation requirements. As a result, Avaya makes no representations whether a particular non-Avaya headset will work with Avaya's telephones or with a different generation of the same Avaya telephone.

Since there is no industry standard for handset interfaces, different manufacturers utilize different handset/headset interfaces with their telephones. Therefore, any claim made by a headset vendor that its product is compatible with Avaya telephones does not equate to a guarantee that the headset will provide adequate safety protection or audio quality.

2.1. Interoperability Compliance Testing

The focus of this testing was to verify that the Myco was able to interoperate with the Communication Server 1000. The following areas were tested:

- Registration of the Myco to the Communication Server 1000.
- Call establishment of Myco with Communication Server 1000 Deskphones.
- Telephony features tested included:
 - Basic calls
 - Conference (Avaya telephones host the conference only)
 - Blind and consultative transfer
 - DTMF transmission
 - Busy, hold, call waiting, call park/pickup
 - Call forward on Busy, No answer and All Calls
- PSTN calls over PRI trunk.
- Codec negotiation (G711 A-Law, G711 MU-Law and G729).

2.2. Test Results

Tests were performed to verify interoperability between Myco and Avaya Communication Server 1000 handsets. The tests were all functional in nature and performance testing was not included. All test cases passed successfully. The following observations were made during compliance testing:

- Call decline does not work as per design intent of SLG as explained in SLG fundamentals; in the section IP-Phone based Call Decline (Refer to **Section 10**, Chapter 5).
- Call Forward Busy and Call Forward No Answer can only be done using the handset configuration on Communication Server 1000 and not by any Flexible Feature Code (FFC), as it is not available.
- G722 Codec could not be tested since there is no provision to add a zone in Communication Server 1000 that can support G722.

2.2.1. Not Supported by Myco Design

The following are not supported by Myco by design,

- Myco does not support at the moment sending EXP=0 in the SIP registration message when shutting the phone down. Known issue (MYCO-3199).
- Myco cannot initiate conference calls however can be included in a conference call.
- Myco does not support local call diversion like Call Forward All, Call Forward Busy and Call Forward No Answer from the smartphones.
- Myco does not support the Message Waiting Indication (MWI) feature.

2.3. Support

Technical support for the Ascom Myco product can be obtained through a local Ascom supplier.
Ascom global technical support:

- Email: support@ascom.se or Help desk: +46 31 559450

3. Reference Configuration

Figure 1 illustrates the test configuration used during the compliance testing between the Avaya Communication Server 1000 and the Ascom Myco system. The Communication Server 1000 runs on the Common Processor Pentium Mobile (CPPM) server as a co-resident configuration. The SLG application on the signaling server co-resides as on the CPPM. Unified Communication Manager (UCM) is used to configure the SLG. A number of Avaya Deskphones were configured. The Wireless Router was connected to the same IP Network as the Communication Server 1000. A simulated PSTN was configured to enable incoming and outgoing trunk calls.

A laptop on the network that can access and connect to the Ascom Device Manager is used to configure the Myco. The Ascom Unite Connectivity Manager (UniteCM) is the core software platform in the Ascom system.

Note: The configuration of the wireless router is outside the scope of these Application Notes.

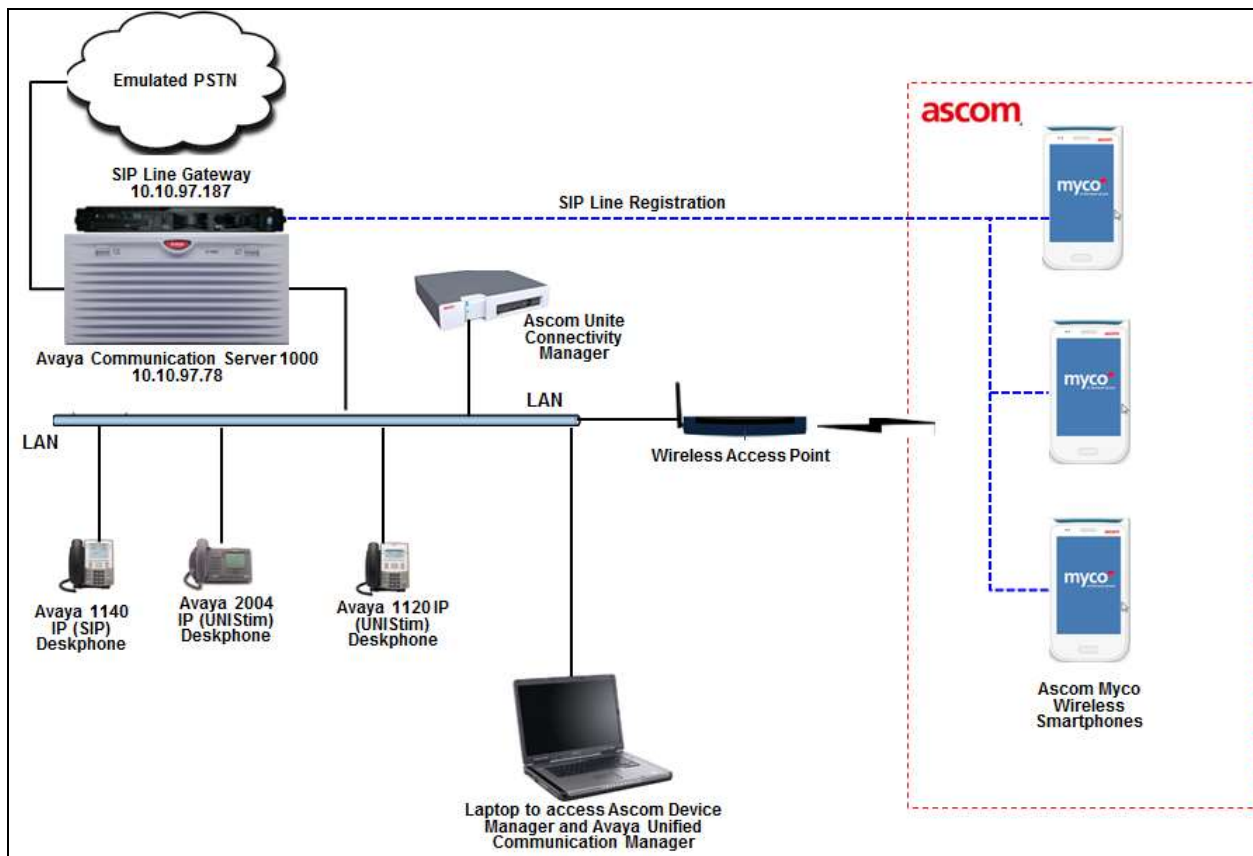


Figure 1: Avaya Communication Server 1000 and Ascom Reference Configuration

4. Equipment and Software Validated

The following equipment and software was used during the lab testing:

Equipment/Software	Release/Version
Call Processor Pentium Mobile (CPPM) SIPLine Gateway	Avaya Communication Server 1000E R7.6 Version 7.65 P (SP6) 7.65.16
Avaya 2004 Deskphone (UNISim) Avaya 1120E Deskphone (UNISim) Avaya 1140E Deskphone (SIP)	0602B76 0624C8Q 04.03.12.00
Ascom WiFi Myco Smartphones	1.8.0
Ascom Device Manager running on Ascom UniteCM	5.3.8
Laptop to access Ascom Device Manager and Avaya UCM	Windows 7 Professional SP1

5. Configure Avaya Communication Server 1000

The configuration operations illustrated in this section were performed using terminal access to the Communication Server 1000 over a telnet session. It is implied that a working system is already in place, including a Node and D-Channel. For all other provisioning information such as Installation and Configuration, please refer to the product documentation in **Section 10**.

Appendix A has a list of all Communication Server 1000 patches, deplist and service packs loaded on the system.

Note: Only the unique prompts as shown in the screen captures below, all other inputs can be left at default.

Note: A full printout of the D-Channel, Route and Trunk information for the SIP Line Gateway used for the compliance testing is included in the **Appendix B** of these Application Notes.

5.1. Verify Licenses

To ensure the Communication Server 1000 is licensed for SIP, use **LD 22** and type **SLT** at the **REQ** prompt. Check for **THIRD PARTY SIP LINES**.

```
ld 22
PT2000
REQ slt
System type is - Communication Server 1000E/CPPM Linux
CPPM - Pentium M 1.4 GHz
IPMGs Registered:          1
IPMGs Unregistered:       0
IPMGs Configured/unregistered: 0

TRADITIONAL TELEPHONES 32767      LEFT 32765      USED      2
DECT USERS              32767      LEFT 32767      USED      0
IP USERS                32767      LEFT 32683      USED     84
BASIC IP USERS          32767      LEFT 32764      USED      3
TEMPORARY IP USERS     32767      LEFT 32766      USED      1
DECT VISITOR USER     10000      LEFT 10000      USED      0
ACD AGENTS             32767      LEFT 32739      USED     28
MOBILE EXTENSIONS      32767      LEFT 32761      USED      6
TELEPHONY SERVICES    32767      LEFT 32767      USED      0
CONVERGED MOBILE USERS 32767      LEFT 32767      USED      0
AVAYA SIP LINES        32767      LEFT 32755      USED     12
THIRD PARTY SIP LINES 32767      LEFT 32740      USED     27

PCA                    32767      LEFT 32764      USED      3
ITG ISDN TRUNKS       32767      LEFT 32767      USED      0
H.323 ACCESS PORTS   32767      LEFT 32767      USED      0
AST                   32767      LEFT 32718      USED     49
SIP CONVERGED DESKTOPS 32767      LEFT 32767      USED      0
SIP CTI TR87         32767      LEFT 32735      USED     32
SIP ACCESS PORTS     32767      LEFT 32703      USED     64
RAN CON              32767      LEFT 32767      USED      0
MUS CON              32767      LEFT 32765      USED      2      ACTIVE      0

IP RAN CON           16384      LEFT 16384      USED      0
IP MUS CON           16896      LEFT 16896      USED      0      ACTIVE      0
IP MEDIA SESSIONS   35842      LEFT 35842      USED      0      ACTIVE      0
```

TNS	32767	LEFT	32376	USED	391
ACDN	24000	LEFT	23979	USED	21
AML	16	LEFT	9	USED	7
IDLE_SET_DISPLAY CPPM3	7.6				
LTID	32760	LEFT	32760	USED	0
RAN RTE	512	LEFT	512	USED	0
ATTENDANT CONSOLES	32767	LEFT	32767	USED	0
IP ATTENDANT CONSOLES	32767	LEFT	32767	USED	0
BRI DSL	10000	LEFT	10000	USED	0
MPH DSL	100	LEFT	100	USED	0
DATA PORTS	32767	LEFT	32767	USED	0
PHANTOM PORTS	32767	LEFT	32767	USED	0
TRADITIONAL TRUNKS	32767	LEFT	32744	USED	23
ELC ACCESS PORTS	32767	LEFT	32767	USED	0
DCH	255	LEFT	251	USED	4

5.2. Configuring Data block: SLS (SIP Line Services)

If not already configured a SLS Data block needs to be created using the **CHG** command in **LD15**. The **UAPR** is required when configuring the UEXT for the Myco. Screen below shows an already configured SLS Data block using the print command in **LD 21**.

```
>ld 21
PT1000
REQ: prt
TYPE: sls
TYPE SLS_DATA
CUST 0
TYPE SLS_DATA
CUST 00
SIPL_ON YES
UAPR 26
NMME YES
```

5.3. Adding a Third-Party SIP User on the Avaya Communication Server 1000

Myco users are configured as **3rd Party SIP** users with type **UEXT** on the Communication Server 1000. Type **LD 20** at the > prompt to enter overlay 20. The main prompts below are highlighted. The example below shows the UEXT for Myco **54600**.

```
ld 20

PT0000
REQ: prt
TYPE: tn
TYPE TNB
TN 104 0 2 0
DATE
PAGE
DES
DES MYCO
TN 104 0 02 00 VIRTUAL
TYPE UEXT
CDEN 8D
CTYP XDLC
```



```

CUST 0
UXTY SIPL      (SIP Line)
MCCL YES
SIPN 0
SIP3 1        (Third Party SIP phones)
FMCL 0
TLSV 0
SIPU 54600    (Required for Ascom Myco Endpoint ID in Section 7)
NDID 512      (Node ID taken from Section 6)
SUPR NO
UXID
NUID
NHTN
CFG_ZONE 00001 (This is the Bandwidth Zone assigned for IP Sets)
CUR_ZONE 00001
MRT
ERL
ECL 0
VSIT NO
FDN 54601
TGAR 1
LDN NO
NCOS 0
SGRP 0
RNPG 1
SCI 0
SSU
XLST
SCPW 1234    (Required for Ascom Myco Password in Section 7)
SFLT NO
CAC MFC 0
CLS CTD FBD WTA LPR PUA MTD FND HTD TDD HFD CRPD
MWD LMPN RMMD SMWD AAD IMD XHD IRD NID OLD VCE DRG1
POD SLKD CCSD SWA LND CNDD
CFTD SFD MRD DDV CNID CDCA MSID DAPA BFED RCBF
ICDD CDMD LLCN MCTD CLBD AUTU
GPUD DPUD DNDD CFXD ARHD CLTD ASCD
CPFA CPTA ABDD CFHD FICD NAID BUZZ AGRD MOAD
UDI RCC HBTD AHA IPND DDGA NAMA MIND PRSD NRWD NRCD NROD
DRDD EXR0
USMD USRD ULAD CCBF RTDD RBDD RBHD PGND OCBF FLXD FTTC DNDY DNO3 MCBN
FDSF NOVD VOLA VOUD CDMR PRED RECD MCDD T87D SBMD ELMD
MSNV FRA PKCH MWTD DVLD CROD ELCD VMSA
CPND_LANG ENG
HUNT 54601
LHK 0
PLEV 02
PUID
UPWD
DANI NO
AST
IAPG 0
AACS NO
ITNA NO
DGRP
MLWU_LANG 0
MLNG ENG
DNDR 0
KEY 00 SCR 54600 0      MARP
CPND
CPND_LANG ROMAN
NAME Myco set1

```

```
XPLN 23
DISPLAY_FMT FIRST, LAST
01 HOT U 2654600 MARP 0 (The HOT U number is derived from the UAPR as configured
in the SLS_DATA in Section 5.2 plus the Key 00 extension)
02 CWT
03
04
05
06
07
08
09
10
11
12
13
14
15
16
17 TRN
18 AO6
19 CFW 16 54353
20 RGA
21 PRK
22 RNP
23
24 PRS
25 CHG
26 CPN
27
28
29
30
31
DATE 30 APR 2015 02
```

5.4. Saving Avaya Communication Server 1000 Configuration

Type **LD 43** at the > prompt to save the newly configured SIP users. Upon entering overlay 43 type **edd** at the . prompt.

```
>ld 43
EDD000
.edd
```

6. Configure Avaya Communication Server 1000 SIP Line Gateway

Although it is assumed that a SIP Line Gateway is already setup, configured and operational it is also essential that this is checked and that the Node IP address is obtained in order to complete the configuration in **Section 5.3** and **Section 7**. Note that the SIP Line Gateway is an application installed on the Avaya Communication Server 1000 Signalling Server. In this example, this Signalling Server is a co-resident installation with Communication Server 1000 Call Server.

Access to the Communication Server 1000 SIP Line Gateway requires access to the Avaya Communication Server 1000 Signalling Server (Signalling Server). This is achieved by logging into System Manager or Unified Communication Manager (UCM) using a Web Browser by entering <http://<IP Address >/>, which is the IP address of System Manager or UCM. During compliance testing UCM was used.

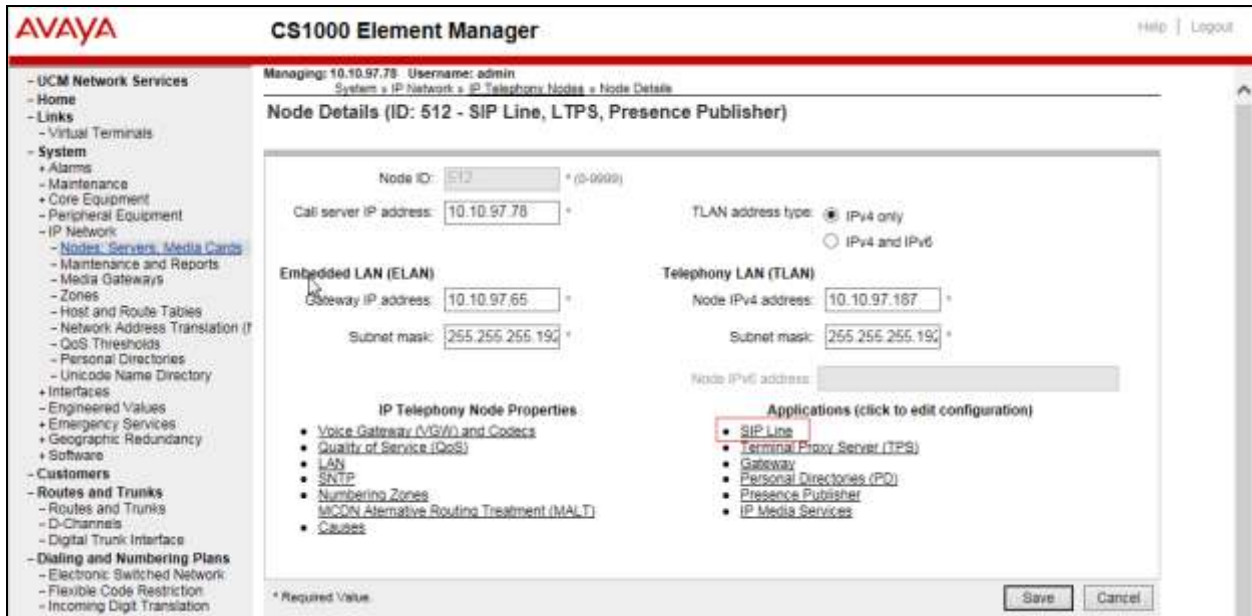
Access the Communication Server 1000 Element Manager via the Unified Communication Manager (not shown).

Navigate to **System** → **IP Network** → **Nodes Servers, Media Cards** in the left window and select the Node associated with the Communication Server 1000, in the example below this **Node ID** is **512**. Open this node by clicking on **512** highlighted below. Note also the Node IP address **10.10.97.187** which will be required in **Section 7**.

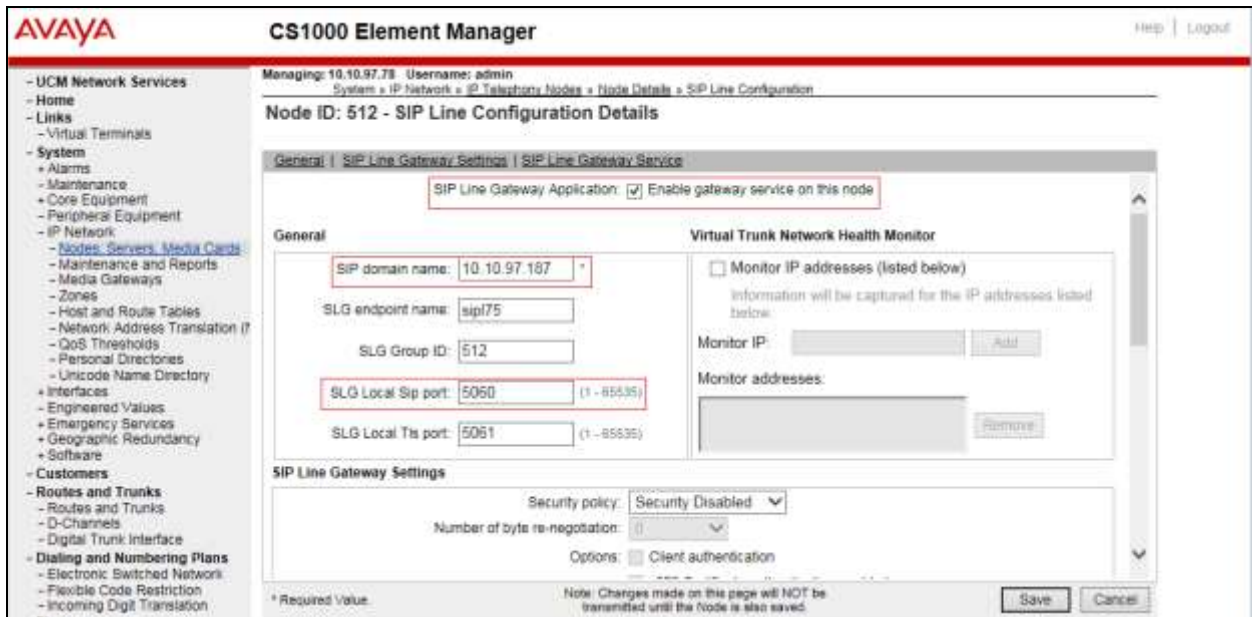
The screenshot shows the Avaya CS1000 Element Manager interface. The left sidebar contains a navigation menu with categories like UCM Network Services, System, and IP Network. The main content area is titled 'IP Telephony Nodes' and includes a table of nodes. The table has the following columns: Node ID, Components, Enabled Applications, ELAN IP, Node/LAN IPv4, Node/LAN IPv6, and Status. The first row shows Node ID 512, Components 'SIP Line, LTPS, Presence, Publisher', ELAN IP '10.10.97.187', and Status 'Synchronized'. The Node ID '512' is highlighted with a red box. Below the table are checkboxes for 'Show Nodes', 'Component servers and cards', and 'IPv6 address'.

Node ID	Components	Enabled Applications	ELAN IP	Node/LAN IPv4	Node/LAN IPv6	Status
512	SIP Line, LTPS, Presence, Publisher		10.10.97.187			Synchronized

To check that the SIP Line Gateway is operational click on **SIP Line** in the main window highlighted below.



The **SIP Line Gateway Application** box should be checked as shown below and the information about the site entered into the **General** section is shown in the example below. Note the **SLG Local Sip port** is set to **5060** and this information as well as the **SIP domain name** will be required in **Section 7**.



7. Configure Ascom Wifi Myco Smartphone

This section describes how to access and configure Myco via the Device Manager. It is implied that the Wifi network has been configured and operational and the Ascom Unite Connectivity Manager box has an IP address assigned.

Note: The Wireless router configuration is outside the scope of these Application Notes.

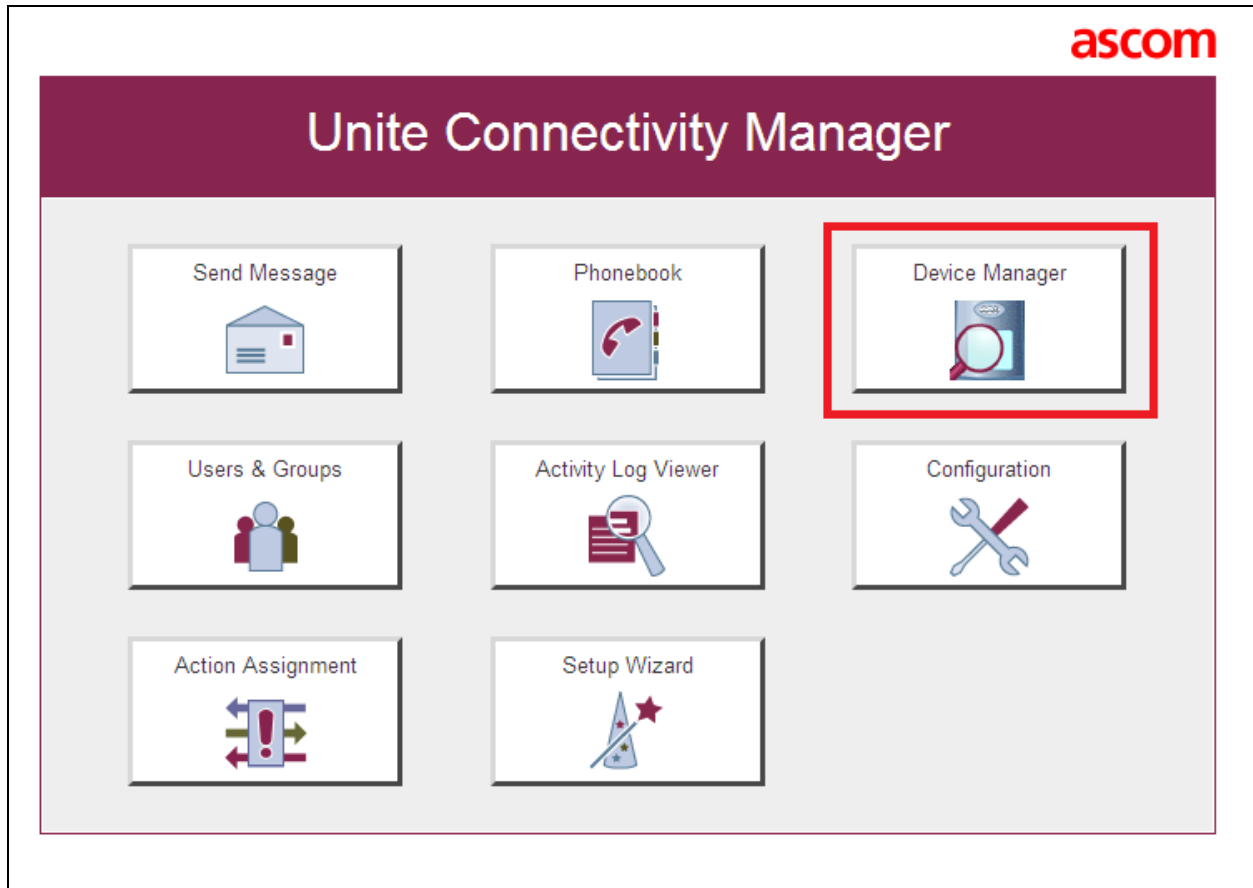
Access the Unite Connectivity Manager box by typing the URL, <http://<ip address>> in a web browser (not shown).

Screen below shows the login screen. Enter the required credentials in the **User name** and **Password** fields and click on **Log in**.

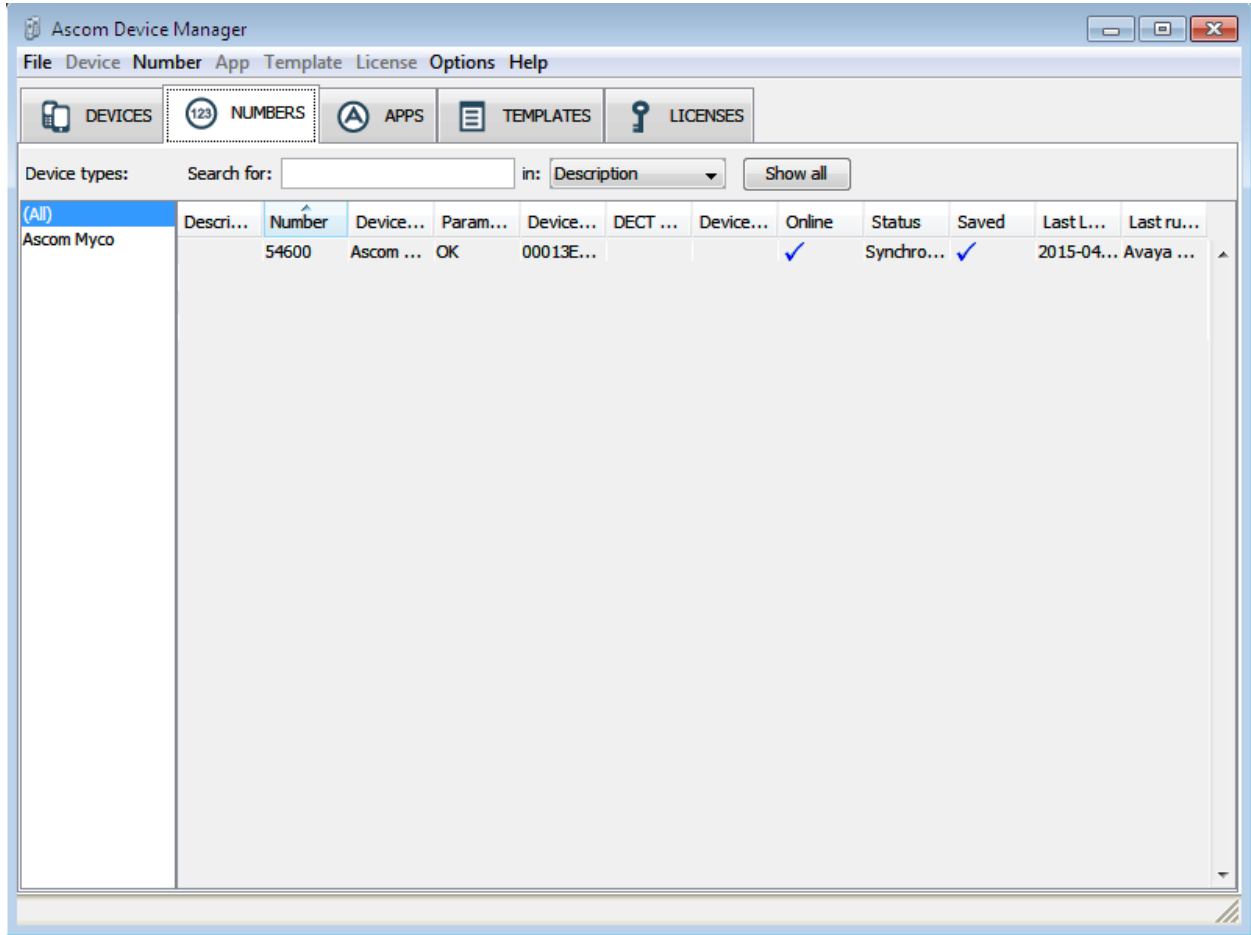


The screenshot shows the login interface for the Unite Connectivity Manager. At the top, there is a dark red banner with the text "UNITE CONNECTIVITY MANAGER" in white. Below the banner is a background image of a network diagram with nodes and connecting lines. The main area is light gray and contains two input fields: "User name" and "Password". To the right of each label is a white rectangular input box. Below the "Password" field is a blue button with the text "Log in" in white.

The main screen of **Unite Connectivity Manager** is seen as shown below. Click on the Device Manager application.



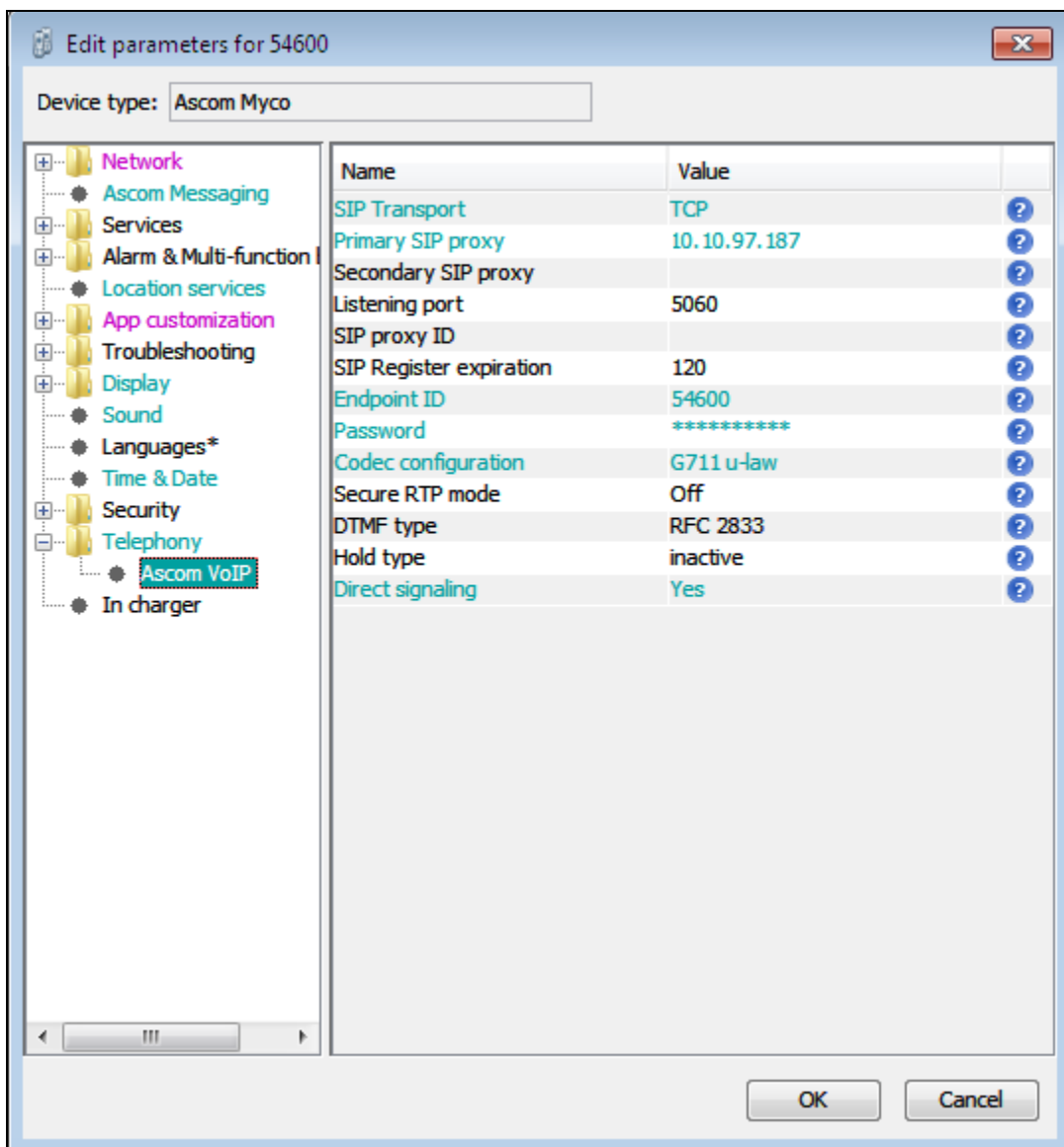
The **Ascom Device Manager** screen is seen as shown below. In the example below, a device with number 54600 is discovered. Double click on this number.



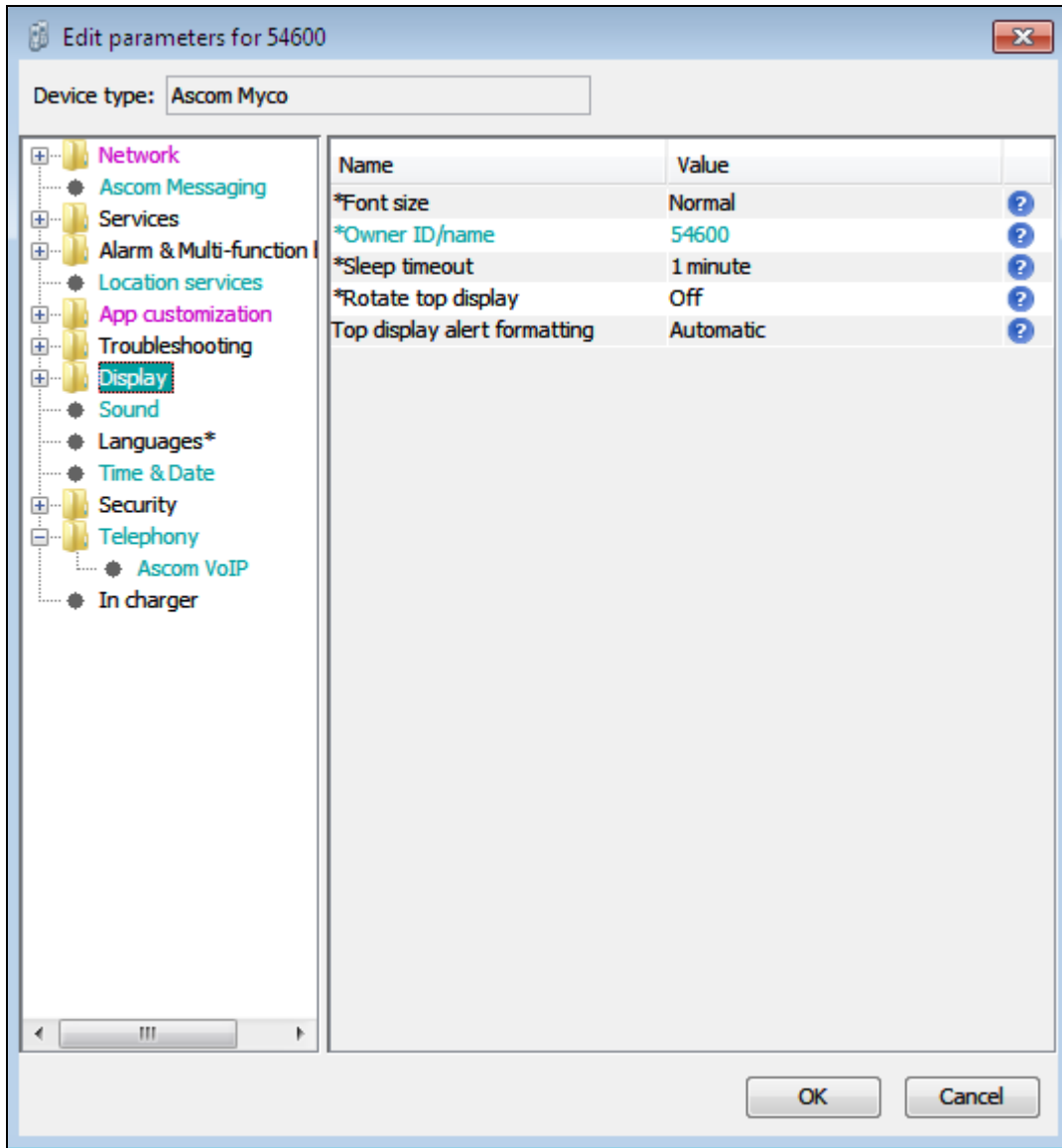
The **Edit parameters for 54600** screen is seen as shown below. Click on **Ascom VoIP** that is seen on the left hand side and configure the following values.

- **SIP Transport:** *TCP*
- **Primary SIP proxy:** *10.10.97.187*; this is the node IP address of the SLG as configured in **Section 6**
- **Listening port:** *5060*; this is the Local Sip port configured on the SLG in **Section 6**
- **Endpoint ID:** *54600*; this is the directory number configured in the Communication Server 1000 in **Section 5.3**
- **Password:** As defined in **Section 5.3**
- **Codec configuration:** In this example *G711 u-law* is selected
- **Direct signaling:** *Yes*

Retain default values for all other fields.



From the same screen as above, click on **Display** and configure the **Owner ID/name** field with the directory number configured, in this case *54600* as shown below. Retain default values for all other fields and click on **OK** to complete the configuration.



8. Verification Steps

This section provides the tests that can be performed to verify correct configuration of the Avaya and Ascom solution.

8.1. Verify Myco is registered with Avaya Communication Server 1000

Screen below shows an example of a SIP phone 54600, in this case the Myco as configured in **Section 5.3** registered to the SIPL Gateway.

```
[admin@sipl75 ~]$ slgSetShowByUID 54600

=== VTRK ===
UserID          AuthId          TN              Clients  Calls  SetHandle  Pos ID          SIPL Type
-----
      54600      54600      104-00-02-00          1      0  0x8e78388          SIP Lines
StatusFlags = Registered Controlled KeyMapDwld SSD
FeatureMask =
CallProcStatus = -1

Current Client = 0, Total Clients = 1

== Client 0 ==
IPv4:Port:Trans = 10.10.5.64:5060:tcp
Type            = Unknown
UserAgent       = (Ascom Myco/11r1 [11.0896])
x-nt-guid       = 7224ed7d7ee02a66a4ee0b8c1d601a34
RegDescrip      =
RegStatus       = 1
PbxReason       = OK
SipCode         = 200
hTransc         = (nil)
Expire          = 120
Nonce           = 5694984ac6929da8f6efb377c8fcd5bd
NonceCount      = 2
hTimer          = 0x8df8ca8
TimeRemain      = 27
Stale           = 0
Outbound        = 0
ClientGUID      = 0
MSec CLS       = MSNV (MSEC-Never)
Contact         = sip:54600@10.10.5.64:5060;transport=TCP
KeyNum         = 255
AutoAnswer     = NO

Key  Func  Lamp  Label
0    3      0     54600
1    126    0     2654600
17   16     0
18   18     0
19   27     0
20   19     0
21   52     0
22   25     0
24   11     0
25   30     0
26   31     0

== Subscription Info ==
Subscription Event = None
Subscription Handle = (nil)
SubscribeFlag = 0
```

9. Conclusion

All of the executed test cases have passed and met the objectives outlined in the **Section 2.1**, with observations outlined in **Section 2.2**. The Ascom Wifi Myco smartphones 1.8.0 is considered to be in compliance with Communication Server 1000 Release 7.6.

10. Additional References

This section references documentation relevant to these Application Notes. The Avaya product documentation is available at <http://support.avaya.com> where the following documents can be obtained.

- [1] *Software Input Output Reference — Administration Avaya Communication Server 1000 R7.6* NN43001-611, 05.02
- [2] *SIP Line Fundamentals Avaya Communication Server 1000 R7.6* NN43001-508, 03.03
- [3] *Co-resident Call Server and Signaling Server Fundamentals Avaya Communication Server 1000 R7.6* NN43001-509, 03.01

Product Documentation for Ascom Products can be obtained from Ascom or may be requested at <https://www.ascom-ws.com/AscomPartnerWeb/Templates/WebLogin.aspx> (login required).

Appendix A

Avaya Communication Server 1000 R7.6 - Linux Patches

```

Product Release: 7.65.16.00
In system patches: 5
PATCH#  NAME      IN_SERVICE  DATE      SPECINS  TYPE  RPM
29      p31484_1    Yes        13/11/14 NO        FRU   cs1000-shared-general-
7.65.16-00.i386
31      p33125_1    Yes        13/11/14 NO        FRU   cs1000-OS-1.00.00.00-
00.noarch
32      p33274_1    Yes        13/11/14 YES       FRU   initscripts-8.45.25-
1.e15.i386
41      p33331_1    Yes        15/01/15 YES       FRU   cs1000-OS-1.00.00.00-
00.noarch
42      p33384_1    Yes        15/01/15 NO        FRU   cs1000-OS-1.00.00.00-
00.noarch

In System service updates: 31
PATCH#  IN_SERVICE  DATE      SPECINS  REMOVABLE  NAME
0        Yes        15/01/15 NO        YES        cs1000-Jboss-Quantum-7.65.16.23-
3.i386.000
1        Yes        13/11/14 NO        YES        cs1000-pd-7.65.16.21-00.i386.000
2        Yes        13/11/14 NO        YES        cs1000-shared-carardtct-
7.65.16.21-01.i386.000
3        Yes        13/11/14 NO        YES        cs1000-shared-tpselect-
7.65.16.21-01.i386.000
4        Yes        13/11/14 NO        yes        cs1000-dbcom-7.65.16.21-
00.i386.000
5        Yes        13/11/14 NO        YES        cs1000-snmp-7.65.16.21-
00.i686.000
8        Yes        13/11/14 NO        YES        cs1000-shared-omm-7.65.16.21-
2.i386.000
9        Yes        13/11/14 YES       YES        cs1000-ipsec-7.65.16.22-
1.i386.000
10       Yes        13/11/14 NO        YES        cs1000-cppmUtil-7.65.16.22-
1.i686.000
11       Yes        13/11/14 YES       YES        cs1000-csoneksvrmgr-7.65.16.22-
5.i386.000
12       Yes        13/11/14 YES       YES        cs1000-baseWeb-7.65.16.22-
4.i386.000
13       Yes        13/11/14 YES       YES        cs1000-oam-logging-7.65.16.22-
4.i386.000
14       Yes        13/11/14 YES       YES        cs1000-csv-7.65.16.22-2.i386.000
16       Yes        13/11/14 YES       YES        cs1000-mscTone-7.65.16.22-
2.i386.000
17       Yes        13/11/14 YES       YES        cs1000-mscMusc-7.65.16.22-
4.i386.000
18       Yes        13/11/14 YES       YES        cs1000-mscConf-7.65.16.22-
2.i386.000
19       Yes        13/11/14 YES       YES        cs1000-mscAnnc-7.65.16.22-
2.i386.000
20       Yes        13/11/14 YES       YES        cs1000-mscAttn-7.65.16.22-
2.i386.000
21       Yes        13/11/14 NO        YES        cs1000-gk-7.65.16.22-1.i386.000
22       Yes        15/01/15 NO        YES        cs1000-sps-7.65.16.23-1.i386.000
24       Yes        13/11/14 YES       YES        cs1000-patchWeb-7.65.16.22-
4.i386.000
25       Yes        15/01/15 YES       YES        cs1000-dmWeb-7.65.16.23-

```

1.i386.000					
26	Yes	13/11/14	YES	YES	cs1000-shared-pbx-7.65.16.22-
3.i386.000					
27	Yes	13/11/14	YES	YES	cs1000-shared-xmsg-7.65.16.22-
1.i386.000					
34	Yes	15/01/15	YES	YES	cs1000-linuxbase-7.65.16.23-
3.i386.000					
35	Yes	15/01/15	YES	YES	jdk-1.6.0_81-fcs.i586.000
36	Yes	15/01/15	YES	YES	cs1000-cs-7.65.P.100-03.i386.000
37	Yes	15/01/15	NO	YES	bash-3.2-33.el5_11.4.i386.000
38	Yes	15/01/15	NO	YES	tzdata-2014g-1.el5.i386.000
39	Yes	15/01/15	YES	YES	cs1000-tps-7.65.16.23-7.i386.000
40	Yes	15/01/15	YES	YES	cs1000-vtrk-7.65.16.23-
24.i386.000					

Avaya Communication Server 1000 R7.6 - Call Server Patches

```

VERSION 4121
RELEASE 7
ISSUE 65 P +
DepList 1: core Issue: 01 (created: 2014-12-09 07:01:45 (est))

```

IN-SERVICE PEPs							
PAT#	CR #	PATCH REF #	NAME	DATE	FILENAME	SPECINS	
0000	wi01132902	ISS1:1OF1	p33028_1	06/05/2015	p33028_1.cpl	NO	
0001	wi01104410	ISS1:1OF1	p32801_1	06/05/2015	p32801_1.cpl	NO	
0002	wi01153896	ISS1:1OF1	p33185_1	06/05/2015	p33185_1.cpl	NO	
0003	wi01096967	ISS1:1OF1	p32735_1	06/05/2015	p32735_1.cpl	NO	
0004	wi01135146	ISS1:1OF1	p33033_1	06/05/2015	p33033_1.cpl	NO	
0005	WI01108562	ISS1:1OF1	p32832_1	06/05/2015	p32832_1.cpl	NO	
0006	wi01099300	iss1:1of1	p32704_1	06/05/2015	p32704_1.cpl	NO	
0007	wi01137694	ISS1:1OF1	p33081_1	06/05/2015	p33081_1.cpl	NO	
0008	wi01088915	ISS1:1OF1	p32638_1	06/05/2015	p32638_1.cpl	NO	
0009	wi01115894	ISS1:1OF1	p32910_1	06/05/2015	p32910_1.cpl	NO	
0010	wi01070279	ISS1:1OF1	p32262_1	06/05/2015	p32262_1.cpl	NO	
0011	wi01146543	ISS1:1OF1	p33097_1	06/05/2015	p33097_1.cpl	NO	
0012	wi01119100	ISS1:1OF1	p32925_1	06/05/2015	p32925_1.cpl	NO	
0013	wi01082456	ISS1:1OF1	p32596_1	06/05/2015	p32596_1.cpl	NO	
0014	wi01124074	ISS1:1OF1	p32989_1	06/05/2015	p32989_1.cpl	NO	
0015	wi01035980	ISS1:1OF1	p32558_1	06/05/2015	p32558_1.cpl	NO	
0016	wi01065922	ISS1:1OF1	p32516_1	06/05/2015	p32516_1.cpl	NO	
0017	WI01169289	ISS1:1OF1	p33257_1	06/05/2015	p33257_1.cpl	NO	
0018	wi01159931	ISS1:1OF1	p33231_1	06/05/2015	p33231_1.cpl	YES	
0019	wi01090535	ISS1:1OF1	p32519_1	06/05/2015	p32519_1.cpl	NO	
0020	wi01034961	ISS1:1OF1	p32144_1	06/05/2015	p32144_1.cpl	NO	
0021	wi01089807	ISS1:1OF1	p32957_1	06/05/2015	p32957_1.cpl	NO	
0022	wi01170583	ISS1:1OF1	p33261_1	06/05/2015	p33261_1.cpl	NO	
0023	wi01174622	ISS1:1OF1	p33293_1	06/05/2015	p33293_1.cpl	YES	
0024	wi01063864	ISS1:1OF1	p32410_1	06/05/2015	p32410_1.cpl	YES	
0025	wi01119736	ISS1:1OF1	p33094_1	06/05/2015	p33094_1.cpl	NO	
0026	wi01142792	ISS1:1OF1	p33099_1	06/05/2015	p33099_1.cpl	NO	
0027	wi01034307	ISS1:1OF1	p32615_1	06/05/2015	p32615_1.cpl	NO	
0028	wi01160967	ISS1:1OF1	p33213_1	06/05/2015	p33213_1.cpl	NO	
0029	wi01099292	ISS1:1OF1	p32886_1	06/05/2015	p32886_1.cpl	NO	
0030	wi01062607	ISS1:1OF1	p32503_1	06/05/2015	p32503_1.cpl	NO	
0031	wi01118819	ISS1:1OF1	p32954_1	06/05/2015	p32954_1.cpl	NO	
0032	wi01180594	ISS1:1OF1	p33312_1	06/05/2015	p33312_1.cpl	NO	
0033	wi01156086	ISS1:1OF1	p33269_1	06/05/2015	p33269_1.cpl	NO	
0034	wi01075149	ISS1:1OF1	p32475_1	06/05/2015	p32475_1.cpl	NO	
0035	wi01102093	ISS1:1OF1	p32760_1	06/05/2015	p32760_1.cpl	NO	

0036	wi01127527	ISS1:1OF1	p32988_1	06/05/2015	p32988_1.cpl	YES
0037	wi01165461	ISS1:1OF1	p33237_1	06/05/2015	p33237_1.cpl	NO
0038	wi01146254	ISS1:1OF1	p33127_1	06/05/2015	p33127_1.cpl	NO
0039	wi01108262	ISS1:1OF1	p32865_1	06/05/2015	p32865_1.cpl	YES
0040	wi01149384	ISS1:1OF1	p33147_1	06/05/2015	p33147_1.cpl	NO
0041	wi01053950	ISS1:1OF1	p32654_1	06/05/2015	p32654_1.cpl	YES
0042	wi01083896	ISS1:1OF1	p32937_1	06/05/2015	p32937_1.cpl	NO
0043	wi01073725	ISS1:1OF1	p32552_1	06/05/2015	p32552_1.cpl	NO
0044	wi01128512	ISS1:1OF1	p32997_1	06/05/2015	p32997_1.cpl	NO
0045	wi01150771	ISS1:1OF1	p33210_1	06/05/2015	p33210_1.cpl	NO
0046	wi01021522	ISS1:1OF1	p32863_1	06/05/2015	p32863_1.cpl	NO
0047	wi01132599	ISS1:1OF1	p33025_1	06/05/2015	p33025_1.cpl	NO
0048	wi01104627	ISS1:1OF1	p32819_1	06/05/2015	p32819_1.cpl	NO
0049	wi01150846	ISS1:1OF1	p33157_1	06/05/2015	p33157_1.cpl	NO
0050	wi01096907	ISS1:1OF1	p32733_1	06/05/2015	p32733_1.cpl	NO
0051	wi01146766	ISS1:1OF1	p33131_1	06/05/2015	p33131_1.cpl	NO
0052	wi01053314	ISS1:1OF1	p32555_1	06/05/2015	p32555_1.cpl	NO
0053	wi01097598	ISS1:1OF1	p32797_1	06/05/2015	p32797_1.cpl	NO
0054	wi01134602	ISS1:1OF1	p32398_1	06/05/2015	p32398_1.cpl	NO
0055	wi01053195	ISS1:1OF1	p32297_1	06/05/2015	p32297_1.cpl	NO
0056	wi00897254	ISS1:1OF1	p31127_1	06/05/2015	p31127_1.cpl	NO
0057	wi01167427	ISS1:1OF1	p33264_1	06/05/2015	p33264_1.cpl	NO
0058	wi01111194	ISS1:1OF1	p32821_1	06/05/2015	p32821_1.cpl	NO
0059	wi01099810	ISS1:1OF1	p32796_1	06/05/2015	p32796_1.cpl	NO
0060	wi01130815	ISS1:1OF1	p33017_1	06/05/2015	p33017_1.cpl	NO
0061	wi01075353	ISS1:1OF1	p32613_1	06/05/2015	p32613_1.cpl	NO
0062	wi01039280	ISS1:1OF1	p32423_1	06/05/2015	p32423_1.cpl	NO
0063	wi01133985	ISS1:1OF1	p33049_1	06/05/2015	p33049_1.cpl	NO
0064	wi01025156	ISS1:1OF1	p32136_1	06/05/2015	p32136_1.cpl	NO
0065	wi01061481	ISS1:1OF1	p32382_1	06/05/2015	p32382_1.cpl	NO
0066	wi01118714	ISS2:1OF1	p32952_2	06/05/2015	p32952_2.cpl	NO
0067	wi01187059	ISS1:1OF1	p33346_1	06/05/2015	p33346_1.cpl	NO
0068	wi01068851	ISS1:1OF1	p32439_1	06/05/2015	p32439_1.cpl	NO
0069	wi01087543	ISS1:1OF1	p32662_1	06/05/2015	p32662_1.cpl	NO
0070	wi01151898	ISS1:1OF1	p33175_1	06/05/2015	p33175_1.cpl	NO
0071	wi01121374	ISS1:1OF1	p31107_1	06/05/2015	p31107_1.cpl	NO
0072	wi01092300	ISS1:1OF1	p32692_1	06/05/2015	p32692_1.cpl	NO
0073	wi01145002	ISS1:1OF1	p33186_1	06/05/2015	p33186_1.cpl	NO
0074	wi01078721	ISS1:1OF1	p32553_1	06/05/2015	p32553_1.cpl	NO
0075	wi01193201	ISS1:1OF1	p33381_1	06/05/2015	p33381_1.cpl	YES
0076	wi01129028	ISS1:1OF1	p33016_1	06/05/2015	p33016_1.cpl	NO
0077	wi01134354	ISS1:1OF1	p33031_1	06/05/2015	p33031_1.cpl	NO
0078	wi01149017	ISS1:1OF1	p33145_1	06/05/2015	p33145_1.cpl	NO
0079	wi01052428	ISS1:1OF1	p32606_1	06/05/2015	p32606_1.cpl	NO
0080	wi01102091	ISS1:1OF1	p32744_1	06/05/2015	p32744_1.cpl	YES
0081	wi01127447	ISS1:1OF1	p32990_1	06/05/2015	p32990_1.cpl	NO
0082	wi01147091	ISS1:1OF1	p33137_1	06/05/2015	p33137_1.cpl	NO
0083	wi01153039	ISS1:1OF1	p17588_1	06/05/2015	p17588_1.cpl	NO
0084	wi01182523	ISS1:1OF1	p33327_1	06/05/2015	p33327_1.cpl	NO
0085	wi01143987	ISS1:1OF1	p33134_1	06/05/2015	p33134_1.cpl	NO
0086	wi01060241	ISS1:1OF1	p32381_1	06/05/2015	p32381_1.cpl	NO
0087	wi01076948	ISS1:1OF1	p32526_1	06/05/2015	p32526_1.cpl	YES
0088	wi01068669	ISS1:1OF1	p32333_1	06/05/2015	p32333_1.cpl	NO
0089	wi01128596	ISS1:1OF1	p33000_1	06/05/2015	p33000_1.cpl	NO
0090	wi01119312	ISS1:1OF1	p32919_1	06/05/2015	p32919_1.cpl	NO
0091	wi01132244	ISS1:1OF1	p33041_1	06/05/2015	p33041_1.cpl	NO
0092	WI01121737	ISS1:1OF1	p32939_1	06/05/2015	p32939_1.cpl	NO
0093	wi01079444	ISS1:1OF1	p32564_1	06/05/2015	p32564_1.cpl	NO
0094	wi01146289	ISS1:1OF1	p33146_1	06/05/2015	p33146_1.cpl	NO
0095	wi01068751	ISS1:1OF1	p32445_1	06/05/2015	p32445_1.cpl	NO
0096	wi01127640	ISS1:1OF1	p32992_1	06/05/2015	p32992_1.cpl	NO
0097	wi01164281	ISS1:1OF1	p33232_1	06/05/2015	p33232_1.cpl	NO

0098	wi01120705	ISS1:1OF1	p32930_1	06/05/2015	p32930_1.cpl	NO
0099	wi01059388	iss1:1of1	p32628_1	06/05/2015	p32628_1.cpl	NO
0100	wi01173798	ISS1:1OF1	p33285_1	06/05/2015	p33285_1.cpl	NO
0101	wi01152195	ISS1:1OF1	p33163_1	06/05/2015	p33163_1.cpl	YES
0102	wi01124477	ISS1:1OF1	p32963_1	06/05/2015	p32963_1.cpl	NO
0103	wi01095255	ISS1:1OF1	p33027_1	06/05/2015	p33027_1.cpl	NO
0104	wi01071659	ISS1:1OF1	p32589_1	06/05/2015	p32589_1.cpl	NO
0105	wi01134952	ISS1:1OF1	p33039_1	06/05/2015	p33039_1.cpl	NO
0106	wi01133960	ISS1:1OF1	p33034_1	06/05/2015	p33034_1.cpl	NO
0107	wi01072027	ISS1:1OF1	p32689_1	06/05/2015	p32689_1.cpl	NO
0108	wi01132215	ISS1:1OF1	p33084_1	06/05/2015	p33084_1.cpl	NO
0109	wi01138136	ISS1:1OF1	p33191_1	06/05/2015	p33191_1.cpl	NO
0110	wi01189247	ISS1:1OF1	p33382_1	06/05/2015	p33382_1.cpl	YES
0111	wi01157590	ISS1:1OF1	p33252_1	06/05/2015	p33252_1.cpl	NO
0112	wi01125238	ISS1:1OF1	p32971_1	06/05/2015	p32971_1.cpl	NO
0113	wi01000087	ISS1:1OF1	p32014_1	06/05/2015	p32014_1.cpl	NO
0114	wi01070580	ISS1:1OF1	p32380_1	06/05/2015	p32380_1.cpl	NO
0115	wi01185441	ISS1:1OF1	p33341_1	06/05/2015	p33341_1.cpl	NO
0116	wi01156999	ISS1:1OF1	p33180_1	06/05/2015	p33180_1.cpl	NO
0117	wi01106658	ISS1:1OF1	p32812_1	06/05/2015	p32812_1.cpl	NO
0118	wi01068011	ISS1:1OF1	p33182_1	06/05/2015	p33182_1.cpl	NO
0119	wi01127874	ISS1:1OF1	p25747_1	06/05/2015	p25747_1.cpl	NO
0120	wi01114695	ISS1:1OF1	p32885_1	06/05/2015	p32885_1.cpl	NO
0121	wi01064599	iss1:1of1	p32580_1	06/05/2015	p32580_1.cpl	NO
0122	wi01101969	ISS1:1OF1	p32726_1	06/05/2015	p32726_1.cpl	NO
0123	wi01189703	ISS1:1OF1	p33357_1	06/05/2015	p33357_1.cpl	NO
0124	wi01175294	ISS1:1OF1	p33290_1	06/05/2015	p33290_1.cpl	NO
0125	wi01098433	ISS1:1OF1	p32736_1	06/05/2015	p32736_1.cpl	NO
0126	wi01154485	ISS1:1OF1	p33194_1	06/05/2015	p33194_1.cpl	NO
0127	wi01120458	ISS1:1OF1	p32929_1	06/05/2015	p32929_1.cpl	NO
0128	wi01188722	ISS1:1OF1	p33365_1	06/05/2015	p33365_1.cpl	NO
0129	wi01102296	ISS1:1OF1	p32780_1	06/05/2015	p32780_1.cpl	NO
0130	wi01096712	ISS1:1OF1	p32708_1	06/05/2015	p32708_1.cpl	NO
0131	wi01123389	ISS1:1OF1	p33045_1	06/05/2015	p33045_1.cpl	NO
0132	wi01070473	ISS1:1OF1	p32413_1	06/05/2015	p32413_1.cpl	NO
0133	wi01035976	ISS1:1OF1	p32173_1	06/05/2015	p32173_1.cpl	NO
0134	wi01077639	ISS1:1OF1	p32883_1	06/05/2015	p32883_1.cpl	NO
0135	wi01093071	ISS1:1OF1	p32701_1	06/05/2015	p32701_1.cpl	NO
0136	wi01022598	ISS1:1OF1	p32066_1	06/05/2015	p32066_1.cpl	NO
0137	wi01080753	ISS1:1OF1	p32518_1	06/05/2015	p32518_1.cpl	NO
0138	wi01114038	ISS1:1OF1	p32869_1	06/05/2015	p32869_1.cpl	NO
0139	wi01066991	ISS1:1OF1	p32449_1	06/05/2015	p32449_1.cpl	NO
0140	wi01092443	ISS1:1OF1	p32676_1	06/05/2015	p32676_1.cpl	NO
0141	wi01105888	ISS1:1OF1	p32794_1	06/05/2015	p32794_1.cpl	NO
0142	wi01094832	iss1:1of1	p32718_1	06/05/2015	p32718_1.cpl	NO
0143	wi01075355	ISS1:1OF1	p32594_1	06/05/2015	p32594_1.cpl	NO
0144	wi01118320	ISS1:1OF1	p32753_1	06/05/2015	p32753_1.cpl	NO
0145	wi01126552	ISS1:1OF1	p32975_1	06/05/2015	p32975_1.cpl	NO
0146	wi01070585	ISS1:1OF1	p32383_1	06/05/2015	p32383_1.cpl	NO
0147	wi01069441	ISS1:1OF1	p32097_1	06/05/2015	p32097_1.cpl	NO
0148	wi01119086	ISS1:1OF1	p32917_1	06/05/2015	p32917_1.cpl	NO
0149	wi01154253	ISS1:1OF1	p33206_1	06/05/2015	p33206_1.cpl	NO
0150	wi01093118	ISS1:1OF1	p32496_1	06/05/2015	p32496_1.cpl	NO
0151	wi01129098	ISS1:1OF1	p32951_1	06/05/2015	p32951_1.cpl	NO
0152	wi01056633	ISS1:1OF1	p32322_1	06/05/2015	p32322_1.cpl	NO
0153	wi01075538	ISS1:1OF1	p32469_1	06/05/2015	p32469_1.cpl	NO
0154	wi01142100	ISS1:1OF1	p33090_1	06/05/2015	p33090_1.cpl	NO
0155	wi01153104	ISS1:1OF1	p33174_1	06/05/2015	p33174_1.cpl	NO
0156	wi01087528	ISS1:1OF1	p32700_1	06/05/2015	p32700_1.cpl	NO
0157	wi01136429	ISS1:1OF1	p33037_1	06/05/2015	p33037_1.cpl	NO
0158	wi01144609	ISS1:1OF1	p33119_1	06/05/2015	p33119_1.cpl	NO
0159	wi01109251	ISS1:1OF1	p32827_1	06/05/2015	p32827_1.cpl	NO

0160	wi01153844	ISS1:1OF1	p33172_1	06/05/2015	p33172_1.cpl	NO
0161	wi01071996	ISS1:1OF1	p32461_1	06/05/2015	p32461_1.cpl	NO
0162	wi01045144	ISS1:1OF1	p33202_1	06/05/2015	p33202_1.cpl	NO
0163	wi01052968	ISS1:1OF1	p32540_1	06/05/2015	p32540_1.cpl	NO
0164	wi01053920	ISS1:1OF1	p32303_1	06/05/2015	p32303_1.cpl	NO
0165	wi01150083	ISS1:1OF1	p33152_1	06/05/2015	p33152_1.cpl	NO
0166	wi01137003	ISS1:1OF1	p33053_1	06/05/2015	p33053_1.cpl	NO
0167	wi01136194	ISS:1OF1	p33051_1	06/05/2015	p33051_1.cpl	NO
0168	wi01132204	ISS1:1OF1	p32501_1	06/05/2015	p32501_1.cpl	NO
0169	WI01077073	ISS1:1OF1	p32534_1	06/05/2015	p32534_1.cpl	NO
0170	wi01173768	ISS1:1OF1	p33288_1	06/05/2015	p33288_1.cpl	NO
0171	wi01094305	ISS1:1OF1	p32640_1	06/05/2015	p32640_1.cpl	NO
0172	wi01065118	ISS1:1OF1	p32397_1	06/05/2015	p32397_1.cpl	NO
0173	wi01070465	issl:1of1	p32562_1	06/05/2015	p32562_1.cpl	NO
0174	wi01099606	issl:1of1	p32713_1	06/05/2015	p32713_1.cpl	NO
0175	wi01088797	ISS1:1OF1	p32844_1	06/05/2015	p32844_1.cpl	NO
0176	wi01070468	issl:1of1	p32418_1	06/05/2015	p32418_1.cpl	NO
0177	WI11032038	ISS1:1OF1	p33022_1	06/05/2015	p33022_1.cpl	NO
0178	wi01134799	ISS1:1OF1	p33069_1	06/05/2015	p33069_1.cpl	NO
0179	wi01163362	ISS1:1OF1	p33224_1	06/05/2015	p33224_1.cpl	YES
0180	wi01096718	ISS1:1OF1	p33138_1	06/05/2015	p33138_1.cpl	YES
0181	wi01186244	ISS1:1OF1	p33345_1	06/05/2015	p33345_1.cpl	NO
0182	wi01063263	ISS1:1OF1	p32573_1	06/05/2015	p32573_1.cpl	NO
0183	wi01070756	ISS1:1OF1	p32444_1	06/05/2015	p32444_1.cpl	NO
0184	wi01151870	ISS1:1OF1	p33162_1	06/05/2015	p33162_1.cpl	YES
0185	wi01081510	ISS1:1OF1	p32582_1	06/05/2015	p32582_1.cpl	NO
0186	wi01144354	ISS1:1OF1	p33117_1	06/05/2015	p33117_1.cpl	NO
0187	wi01045058	ISS1:1OF1	p32214_1	06/05/2015	p32214_1.cpl	NO
0188	wi01177328	ISS1:1OF1	p33306_1	06/05/2015	p33306_1.cpl	NO
0189	wi01091447	ISS1:1OF1	p32675_1	06/05/2015	p32675_1.cpl	NO
0190	wi01065248	ISS1:1OF1	p32412_1	06/05/2015	p32412_1.cpl	NO
0191	wi01095462	ISS1:1OF1	p32723_1	06/05/2015	p32723_1.cpl	NO
0192	wi01132222	ISS1:1OF1	p33023_1	06/05/2015	p33023_1.cpl	NO
0193	wi01104473	ISS1:1OF1	p32818_1	06/05/2015	p32818_1.cpl	NO
0194	wi01094727	ISS1:1OF1	p32848_1	06/05/2015	p32848_1.cpl	NO
0195	wi01130836	ISS1:1OF1	p33008_1	06/05/2015	p33008_1.cpl	YES
0196	wi01057403	ISS1:1OF1	p32591_1	06/05/2015	p32591_1.cpl	NO
0197	wi01163826	ISS1:1OF1	p33229_1	06/05/2015	p33229_1.cpl	NO
0198	wi01075540	ISS1:1OF1	p32492_1	06/05/2015	p32492_1.cpl	NO
0199	wi01089519	ISS1:1OF1	p32665_1	06/05/2015	p32665_1.cpl	NO
0200	wi01060826	ISS1:1OF1	p32379_1	06/05/2015	p32379_1.cpl	NO
0201	wi01096842	ISS1:1OF1	p32731_1	06/05/2015	p32731_1.cpl	NO
0202	wi01177690	ISS1:1OF1	p33320_1	06/05/2015	p33320_1.cpl	YES
0203	wi01072062	ISS1:1OF1	p32776_1	06/05/2015	p32776_1.cpl	NO
0204	wi01102475	ISS1:1OF1	p32782_1	06/05/2015	p32782_1.cpl	YES
0205	wi01191767	ISS1:1OF1	p33368_1	06/05/2015	p33368_1.cpl	NO
0206	wi01104867	ISS1:1OF1	p32828_1	06/05/2015	p32828_1.cpl	NO
0207	wi01060611	ISS1:1OF1	p32809_1	06/05/2015	p32809_1.cpl	NO
0208	wi01139981	ISS1:1OF1	p33083_1	06/05/2015	p33083_1.cpl	NO
0209	wi01043367	ISS1:1OF1	p32232_1	06/05/2015	p32232_1.cpl	NO
0210	wi01171467	ISS1:1OF1	p33270_1	06/05/2015	p33270_1.cpl	NO
0211	wi01122174	ISS1:1OF1	p32936_1	06/05/2015	p32936_1.cpl	NO
0212	wi01100508	ISS1:1OF1	p32761_1	06/05/2015	p32761_1.cpl	NO
0213	wi01060382	issl:1of1	p32623_1	06/05/2015	p32623_1.cpl	YES
0214	wi01096910	ISS1:1OF1	p32734_1	06/05/2015	p32734_1.cpl	NO
0215	wi01075359	ISS1:1OF1	p32671_1	06/05/2015	p32671_1.cpl	NO
0216	wi00937672	ISS1:1OF1	p31276_1	06/05/2015	p31276_1.cpl	NO
0217	wi01165870	ISS1:1OF1	p33238_1	06/05/2015	p33238_1.cpl	NO
0218	wi01113374	ISS1:1OF1	p32874_1	06/05/2015	p32874_1.cpl	NO
0219	wi01147983	ISS1:1OF1	p33141_1	06/05/2015	p33141_1.cpl	NO
0220	wi01065125	ISS1:1OF1	p32416_1	06/05/2015	p32416_1.cpl	NO
0221	wi01136640	ISS1:1OF1	p33052_1	06/05/2015	p33052_1.cpl	NO

0222	wi01083036	ISS1:1OF1	p32571_1	06/05/2015	p32571_1.cpl	NO
0223	wi01089355	ISS1:1OF1	p32674_1	06/05/2015	p32674_1.cpl	YES
0224	wi01107601	ISS1:1OF1	p32970_1	06/05/2015	p32970_1.cpl	NO
0225	wi01137737	ISS1:1OF1	p33055_1	06/05/2015	p33055_1.cpl	NO
0226	wi01071379	ISS1:1OF1	p32522_1	06/05/2015	p32522_1.cpl	NO
0227	wi01098783	ISS1:1OF1	p32748_1	06/05/2015	p32748_1.cpl	NO
0228	wi01165881	ISS1:1OF1	p33239_1	06/05/2015	p33239_1.cpl	NO
0229	wi01088055	ISS1:1OF1	p32607_1	06/05/2015	p32607_1.cpl	NO
0230	wi01071296	ISS1:1OF1	p32836_1	06/05/2015	p32836_1.cpl	NO
0231	wi01068922	ISS1:1OF1	p32454_1	06/05/2015	p32454_1.cpl	NO
0232	wi01085855	ISS1:1OF1	p32658_1	06/05/2015	p32658_1.cpl	NO
0233	wi01099724	ISS1:1OF1	p32742_1	06/05/2015	p32742_1.cpl	YES
0234	wi01041453	ISS1:1OF1	p32587_1	06/05/2015	p32587_1.cpl	NO
0235	wi01110593	ISS1:1OF1	p32849_1	06/05/2015	p32849_1.cpl	NO
0236	wi01108828	ISS1:1OF1	p32831_1	06/05/2015	p32831_1.cpl	NO
0237	wi01098905	ISS1:1OF1	p32556_1	06/05/2015	p32556_1.cpl	NO
0238	wi01058378	ISS1:1OF1	p32344_1	06/05/2015	p32344_1.cpl	NO
0239	wi01130348	ISS1:1OF1	p33014_1	06/05/2015	p33014_1.cpl	NO
0240	wi01146804	ISS1:1OF1	p33132_1	06/05/2015	p33132_1.cpl	NO
0241	wi01171418	ISS1:1OF1	p33278_1	06/05/2015	p33278_1.cpl	NO
0242	wi01133106	ISS1:1OF1	p33032_1	06/05/2015	p33032_1.cpl	NO
0243	wi01112655	ISS1:1OF1	p32870_1	06/05/2015	p32870_1.cpl	NO
0244	wi01058621	ISS1:1OF1	p32339_1	06/05/2015	p32339_1.cpl	NO
0245	wi01166065	ISS1:1OF1	p33241_1	06/05/2015	p33241_1.cpl	NO
0246	WI0110261	ISS1:1OF1	p32758_1	06/05/2015	p32758_1.cpl	NO
0247	wi01126454	ISS1:1OF1	p32973_1	06/05/2015	p32973_1.cpl	NO
0248	wi01109345	ISS1:1OF1	p32830_1	06/05/2015	p32830_1.cpl	NO
0249	wi01120406	ISS1:1OF1	p32956_1	06/05/2015	p32956_1.cpl	NO
0250	wi01182050	ISS1:1OF1	p33322_1	06/05/2015	p33322_1.cpl	NO
0251	wi01163048	ISS1:1OF1	p33223_1	06/05/2015	p33223_1.cpl	YES
0252	wi01163521	ISS1:1OF1	p33226_1	06/05/2015	p33226_1.cpl	NO
0253	wi01053597	ISS1:1OF1	p32304_1	06/05/2015	p32304_1.cpl	NO
0254	wi01101876	ISS1:1OF1	p32858_1	06/05/2015	p32858_1.cpl	NO
0255	wi01115369	ISS1:1OF1	p32889_1	06/05/2015	p32889_1.cpl	NO
0256	wi01101385	ISS1:1OF1	p32773_1	06/05/2015	p32773_1.cpl	YES
0257	wi01051200	ISS1:1OF1	p32290_1	06/05/2015	p32290_1.cpl	NO
0258	wi01088775	ISS1:1OF1	p32659_1	06/05/2015	p32659_1.cpl	NO
0259	wi01118928	ISS1:1OF1	p32922_1	06/05/2015	p32922_1.cpl	NO
0260	wi01132883	ISS1:1OF1	p33030_1	06/05/2015	p33030_1.cpl	NO
0261	wi01146705	ISS1:1OF1	p33129_1	06/05/2015	p33129_1.cpl	NO
0262	wi01127138	ISS1:1OF1	p33304_1	06/05/2015	p33304_1.cpl	NO
0263	wi01181456	ISS1:1OF1	p33319_1	06/05/2015	p33319_1.cpl	NO
0264	wi01177614	ISS1:1OF1	p33303_1	06/05/2015	p33303_1.cpl	NO
0265	wi01008182	ISS1:1OF1	p33277_1	06/05/2015	p33277_1.cpl	NO
0266	wi01184272	ISS1:1OF1	p33336_1	06/05/2015	p33336_1.cpl	NO
0267	wi01188972	ISS1:1OF1	p33352_1	06/05/2015	p33352_1.cpl	NO
0268	wi01187443	ISS1:1OF1	p33359_1	06/05/2015	p33359_1.cpl	NO
0269	wi01169714	ISS1:1OF1	p33335_1	06/05/2015	p33335_1.cpl	NO
0270	wi01181578	ISS1:1OF1	p33321_1	06/05/2015	p33321_1.cpl	NO
0271	wi01185642	ISS1:1OF1	p33342_1	06/05/2015	p33342_1.cpl	NO
0272	wi01184588	ISS1:1OF1	p33338_1	06/05/2015	p33338_1.cpl	NO
0273	wi01181423	ISS1:1OF1	p33318_1	06/05/2015	p33318_1.cpl	NO
0274	wi01186846	ISS1:1OF1	p33332_1	06/05/2015	p33332_1.cpl	NO
0275	wi01182880	ISS1:1OF1	p33328_1	06/05/2015	p33328_1.cpl	NO
0276	wi01181197	ISS1:1OF1	p33317_1	06/05/2015	p33317_1.cpl	NO
0277	wi01184446	ISS1:1OF1	p33337_1	06/05/2015	p33337_1.cpl	YES
0278	wi01141625	ISS1:1OF1	p33324_1	06/05/2015	p33324_1.cpl	NO
0279	wi01174116	ISS1:1OF1	p33287_1	06/05/2015	p33287_1.cpl	NO
0280	wi01181171	ISS1:1OF1	p33315_1	06/05/2015	p33315_1.cpl	NO
0281	wi01190506	ISS1:1OF1	p33361_1	06/05/2015	p33361_1.cpl	NO
0282	wi01178476	ISS1:1OF1	p33305_1	06/05/2015	p33305_1.cpl	NO
0283	wi01189516	ISS1:1OF1	p33373_1	06/05/2015	p33373_1.cpl	NO

0284	wi01148697	ISS1:1OF1	p33187_1	06/05/2015	p33187_1.cp1	NO
0285	wi01183783	ISS1:1OF1	p33333_1	06/05/2015	p33333_1.cp1	NO
0286	wi01181174	ISS1:1OF1	p33316_1	06/05/2015	p33316_1.cp1	NO
0287	wi01181854	ISS1:1OF1	p33323_1	06/05/2015	p33323_1.cp1	NO
0288	wi00959458	ISS1:1OF1	p31551_1	06/05/2015	p31551_1.cp1	NO
0289	wi01166011	ISS1:1OF1	p33235_1	06/05/2015	p33235_1.cp1	NO

Appendix B

Avaya Communication Server 1000 Route for SIP Line Gateway

```

>ld 21
PT1000
REQ: prt
TYPE: rdb
CUST 0
ROUT 3
TYPE RDB
CUST 00
ROUT 3
DES SIPLINE
TKTP TIE
M911P NO
ESN NO
RPA NO
CNVT NO
SAT NO
RCLS EXT
VTRK YES
ZONE 00254
PCID SIPL
CRID NO
NODE 512
DTRK NO
ISDN YES
    MODE ISLD
    DCH 3
    IFC SL1
    PNI 00001
    NCNA YES
    NCRD YES
    TRO NO
    FALT NO
    CTYP UKWN
    INAC NO
    ISAR NO
    DAPC NO
MBXR NO
MBXOT NPA
MBXT 0
PTYP ATT
CNDP CDP
AUTO NO
DNIS NO
DCDR NO
ICOG IAO
SRCH LIN
TRMB YES

```

STEP
ACOD 8003
TCPP NO
PII NO
AUXP NO
TARG 01
CLEN 1
BILN NO
OABS
INST
IDC NO
DCNO 0 *
NDNO 0
DEXT NO
ANTK
SIGO STD
STYP SDAT
MFC NO
ICIS YES
OGIS YES
PTUT 0
TIMR ICF 512

PAGE 002

OGF 512
EOD 13952
DSI 34944
NRD 10112
DDL 70
ODT 4096
RGV 640
GTO 896
GTI 896
SFB 3
NBS 2048
NBL 4096

IENB 5
TFD 0
VSS 0
VGD 6
EESD 1024
SST 5 0
DTD NO
SCDT NO
2 DT NO
NEDC ORG
FEDC ORG
CPDC NO
DLTN NO
HOLD 02 02 40
SEIZ 02 02
SVFL 02 02
DRNG NO
CDR NO
NATL YES
SSL
CFWR NO
IDOP NO
VRAT NO

```
MUS YES
MRT 15
PANS YES
RACD NO
MANO NO
FRL 0 0
FRL 1 0
FRL 2 0
FRL 3 0
FRL 4 0
FRL 5 0
FRL 6 0
FRL 7 0
OHQ NO
OHQT 00
CBQ NO
AUTH NO
TDET NO
TTBL 0
ATAN NO
OHTD NO
PLEV 2
OPR NO
ALRM NO
ART 0
PECL NO
```

PAGE 003

```
DCTI 0
TIDY 8003 1
ATTR NO
TRRL NO
SGRP 0
CCBA NO
ARDN NO
CTBL 0
AACR NO
```

Avaya Communication Server 1000 D-Channel for SIP line Gateway

```
LD 22
REQ prt
TYPE adan dch 3
ADAN DCH 3
CTYP DCIP
DES SIPLine
USR ISLD
ISLM 4000
SSRC 3700
OTBF 32
NASA NO
IFC SL1
CNEG 1
RLS ID 7
RCAP ND2 MWI
MBGA NO
H323
OVLN NO
```

Avaya Communication Server 1000 Trunk Channel for SIP line Gateway

```
LD 20
DES SIPLINE
TN 100 0 01 02 VIRTUAL
TYPE IPTI
CDEN 8D
CUST 0
XTRK VTRK
ZONE 00254
LDOP BOP
TIMP 600
BIMP 600
AUTO_BIMP NO
NMUS NO
TRK ANLG
NCOS 7
RTMB 3 3
CHID 3
TGAR 1
STRI/STRO IMM IMM
SUPN YES
AST NO
IAPG 0
CLS UNR DIP CND ECD WTA LPR APN THFD XREP SPCD MSBT
P10 NTC MID
TKID
AACR NO
DATE NO DATE
```

©2015 Avaya Inc. All Rights Reserved.

Avaya and the Avaya Logo are trademarks of Avaya Inc. All trademarks identified by ® and ™ are registered trademarks or trademarks, respectively, of Avaya Inc. All other trademarks are the property of their respective owners. The information provided in these Application Notes is subject to change without notice. The configurations, technical data, and recommendations provided in these Application Notes are believed to be accurate and dependable, but are presented without express or implied warranty. Users are responsible for their application of any products specified in these Application Notes.

Please e-mail any questions or comments pertaining to these Application Notes along with the full title name and filename, located in the lower right corner, directly to the Avaya DevConnect Program at devconnect@avaya.com.