



Application Notes for Jabra Engage 40 (Inline Link) UC Stereo/Mono USB-A/USB-C headset and Jabra Direct for Windows with Avaya Workplace Client for Windows - Issue 1.0

Abstract

These Application Notes describe the configuration steps required to integrate Jabra Engage 40 (Inline Link) UC Stereo/Mono USB-A/USB-C headset and Jabra Direct for Windows with Avaya Workplace Client for Windows.

Readers should pay attention to **Section 2**, in particular the scope of testing as outlined in **Section 2.1** as well as any observations noted in **Section 2.2**, to ensure that their own use cases are adequately covered by this scope and results.

Information in these Application Notes has been obtained through DevConnect compliance testing and additional technical discussions. Testing was conducted via the DevConnect Program at the Avaya Solution and Interoperability Test Lab.

1. Introduction

Jabra Engage 40 (Inline Link) UC Stereo/Mono USB-A/USB-C headset and Jabra Direct for Windows allows connection and call control with Avaya Workplace Client for Windows (hereafter referred to as Avaya Workplace) via the USB interface to the PC. In this compliance test, only Jabra Engage 40 (Inline Link) UC Stereo USB-A headset is used since there are similarities between Jabra Engage 40 (Inline Link) UC Mono and Stereo models (see **Attachment 1**, Jabra Engage 40 (Inline Link) UC Declaration of Similarity).

With a Jabra Engage 40 (Inline Link) UC Stereo/Mono USB-A/USB-C headset connected to the PC USB interface, users can directly answer, end, mute/unmute, hold/resume and adjust volume with Avaya Workplace running on the PC.

2. General Test Approach and Test Results

The interoperability compliance test included feature and serviceability testing. The feature testing focused on placing calls with Avaya Workplace, answering and ending calls using the call control buttons on Engage 40 (Inline Link) UC, and verifying two-way audio. The call types included calls to voicemail, local extensions, and the PSTN. Call hold and resume, mute and unmute, and volume are also tested.

The serviceability testing focused on verifying the usability of the headset solution after restarting Avaya Workplace, restarting the PC, and disconnecting/reconnecting the Engage 40 (Inline Link) UC USB connection to the PC.

DevConnect Compliance Testing is conducted jointly by Avaya and DevConnect members. The jointly defined test plan focuses on exercising APIs and/or standards-based interfaces pertinent to the interoperability of the tested products and their functionalities. DevConnect Compliance Testing is not intended to substitute full product performance or feature testing performed by DevConnect members, nor is it to be construed as an endorsement by Avaya of the suitability or completeness of a DevConnect member's solution.

Avaya recommends our customers implement Avaya solutions using appropriate security and encryption capabilities enabled by our products. The testing referenced in these DevConnect Application Notes included the enablement of supported encryption capabilities in the Avaya products. Readers should consult the appropriate Avaya product documentation for further information regarding security and encryption capabilities supported by those Avaya products.

Support for these security and encryption capabilities in any non-Avaya solution component is the responsibility of each individual vendor. Readers should consult the appropriate vendor-supplied product documentation for more information regarding those products.

For the testing associated with these Application Notes, the interface between Avaya systems and endpoints utilized enabled capabilities of TLS/SRTP.

Avaya's formal testing and Declaration of Conformity is provided only on the headsets/handsets that carry the Avaya brand or logo. Avaya may conduct testing of non-Avaya headset/handset to

determine interoperability with Avaya phones. However, Avaya does not conduct the testing of non-Avaya headsets/handsets for: Acoustic Pressure, Safety, Hearing Aid Compliance, EMC regulations, or any other tests to ensure conformity with safety, audio quality, long-term reliability or any regulation requirements. As a result, Avaya makes no representations whether a particular non-Avaya headset will work with Avaya's telephones or with a different generation of the same Avaya telephone.

Since there is no industry standard for handset interfaces, different manufacturers utilize different handset/headset interfaces with their telephones. Therefore, any claim made by a headset vendor that its product is compatible with Avaya telephones does not equate to a guarantee that the headset will provide adequate safety protection or audio quality.

2.1. Interoperability Compliance tests

All test cases were performed manually. The following features were verified:

- Placing calls to internal extensions to verify two-way audio.
- Placing calls to the PSTN to verify two-way audio.
- Answering and ending calls using the call button on the headset and the soft button on Avaya Workplace.
- Using the hold button on the headset and the soft button on Avaya Workplace to hold and resume the audio.
- Using the volume buttons on the headset to adjust the audio volume.
- Using the mute button on the headset and the soft button on Avaya Workplace to mute and un-mute the audio.
- Verifying incoming call notification on the headset.
- Verifying call ended notification on the headset.
- Placing calls to the voicemail system. Voice messages were recorded and played back to verify that the playback volume and recording level were good.

The serviceability testing focused on verifying the usability of the headset solution after restarting Avaya Workplace, restarting the PC, and disconnecting/reconnecting the Engage 40 (Inline Link) UC USB connection to the PC.

2.2. Test Results

All test cases were completed successfully.

2.3. Support

For support on this Jabra headset solution, contact Jabra Technical Support at:

- Phone: +1-866-697-8757
- Website: <http://www.jabra.com/Support>
- Email: JabraSupport.US@jabra.com

3. Reference Configuration

Figure 1 illustrates the test configuration used to verify Jabra Engage 40 (Inline Link) UC Stereo USB-A headset with Avaya Workplace. The Avaya Workplace software was installed on the PC. Jabra Engage 40 (Inline Link) UC Stereo USB-A headset communicates via USB-A connection to the PC hosting Avaya Workplace.

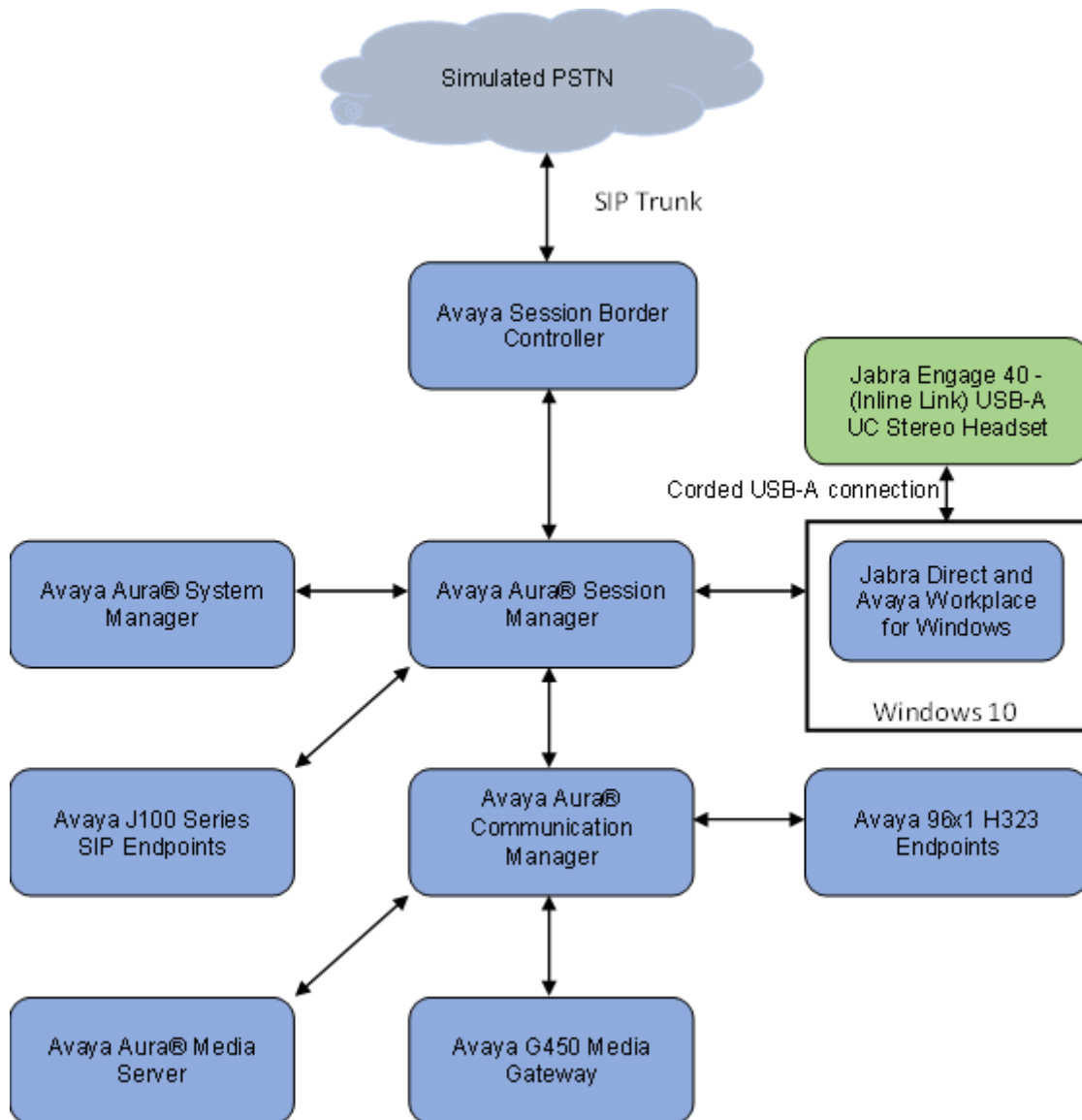


Figure 1: Test Configuration

4. Equipment and Software Validated

The following equipment and software were used for the sample configuration.

Equipment/Software	Release/Version
Avaya Aura® Communication Manager running on Virtual Machine	10.1.0.1-SP1 01.0.974.0-27372
Avaya G450 Media Gateway	FW 42.7.0
Avaya Aura® System Manager running on Virtual Machine	10.1.0.1.0614394
Avaya Aura® Session Manager running on Virtual Machine	10.1.0.0.1010105
Avaya Session Border Controller for Enterprise running on Virtual Machine	10.1.1.0-35- 21872
Avaya Aura® Media Server running on Virtual Machine	10.1.0.77
Avaya 96x1 Series IP Deskphones	6.8.5.3.2 (H.323)
Avaya J179 SIP Deskphone	4.0.13.0.6 (SIP)
Avaya Workplace for Windows	3.29.0.54
Jabra Engage 40 (Inline Link) USB-A UC Stereo	3.7.2
Jabra Direct Software	6.3.22201

5. Configure Avaya Aura® Session Manager

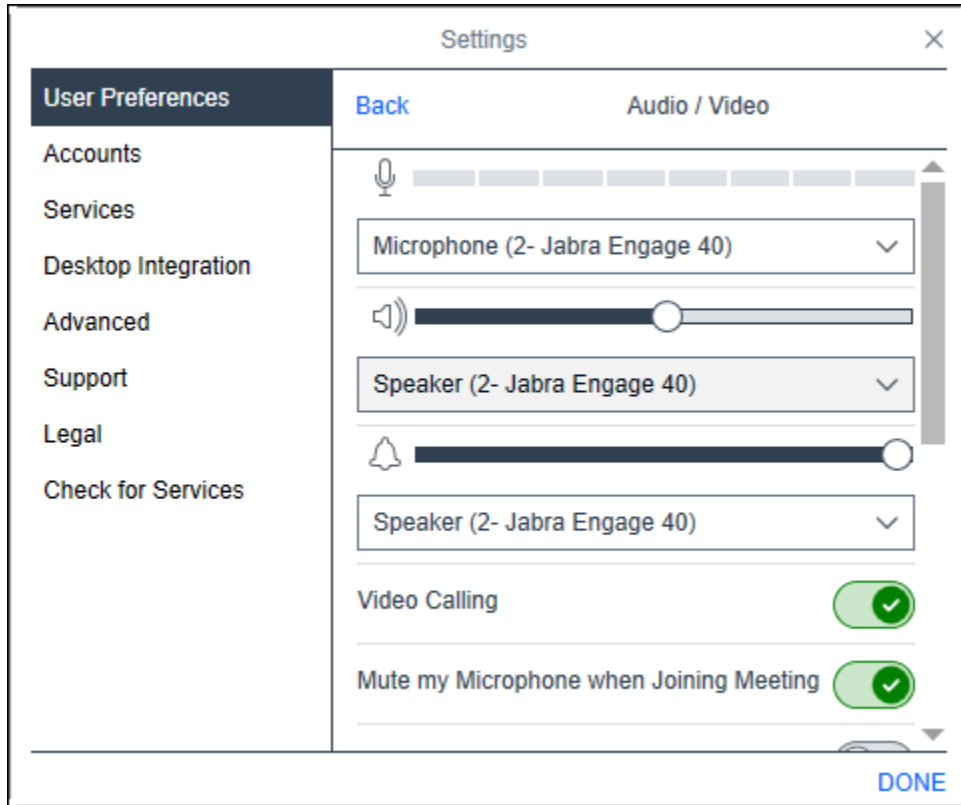
5.1. Add SIP User

The addition of SIP Users will not be detailed here. Refer to details in adding users in the administration document for Avaya Aura® Session Manager in [2] listed in **Section 10** for details.

6. Configure Avaya Workplace Client

Avaya Workplace is a SIP soft phone application that provides users with access to Unified Communications (UC) services. This section shows how to configure Engage 40 (Inline Link) UC headset to interoperate with Avaya Workplace. Before configuring the Avaya Workplace Client, the headset has to be configured as in **Section 7** first.

Log in to Avaya Workplace with a valid SIP user. From Avaya Workplace, navigate to **Settings** → **User Preferences** → **Audio/Video**.



Select entries containing *Jabra Engage 40* (the ringer is optional).

7. Configure Jabra Engage 40 (Inline Link) UC Stereo USB-A Headset Environment

This section covers the steps to integrate Engage 40 (Inline Link) UC with Avaya Workplace, including:

- Installing Jabra Direct software
- Connecting the Jabra headset

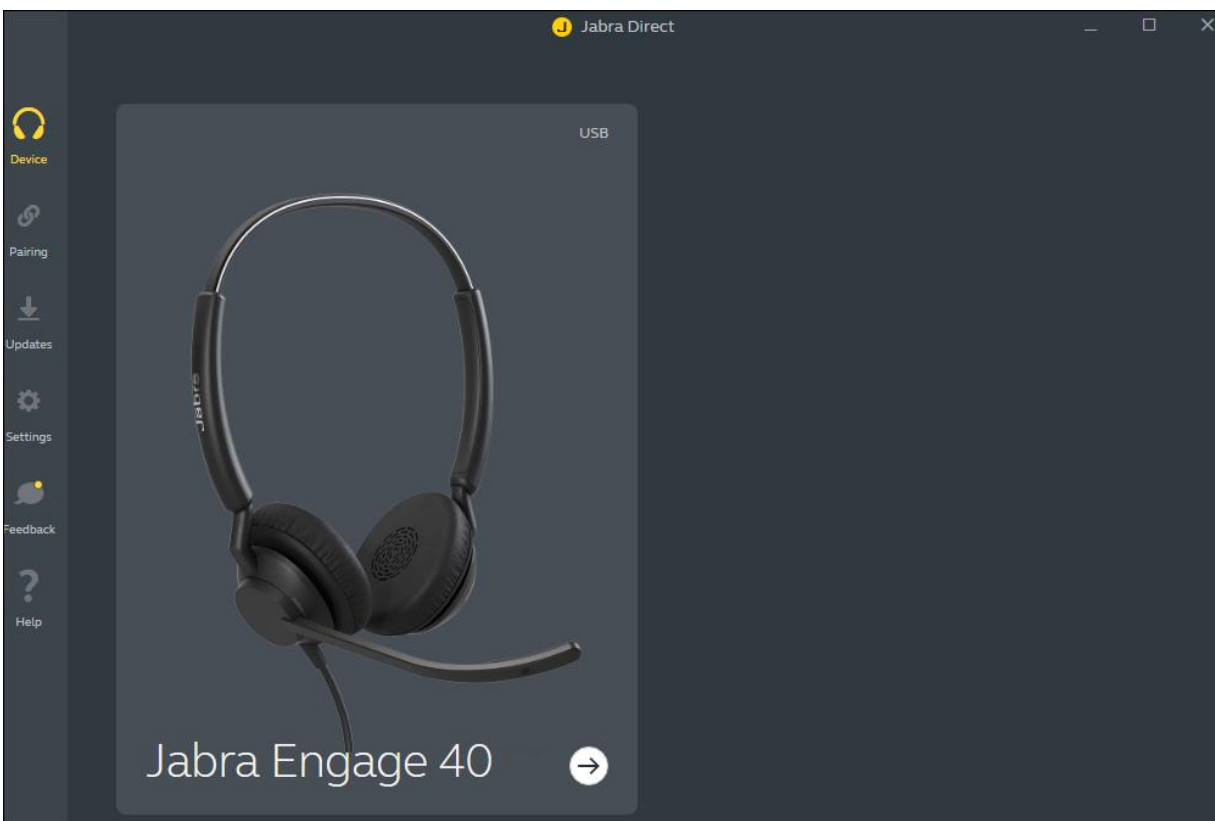
Note: After successfully performing this procedure, Engage 40 (Inline Link) UC will be detected in Avaya Workplace as described in **Section 6**.

7.1. Install Jabra Direct Software

Jabra Direct software can be obtained from the Jabra support portal at <https://www.jabra.com/support/>. Installation of the software is done through executing the setup file and following the prompts.

7.2. Connect the Jabra Headset

Plug Engage 40 (Inline Link) UC headset in the USB port of the PC. Open the Jabra Direct application. Select the **Device** icon on the left side of the window. The window should display *Jabra Engage 40*.

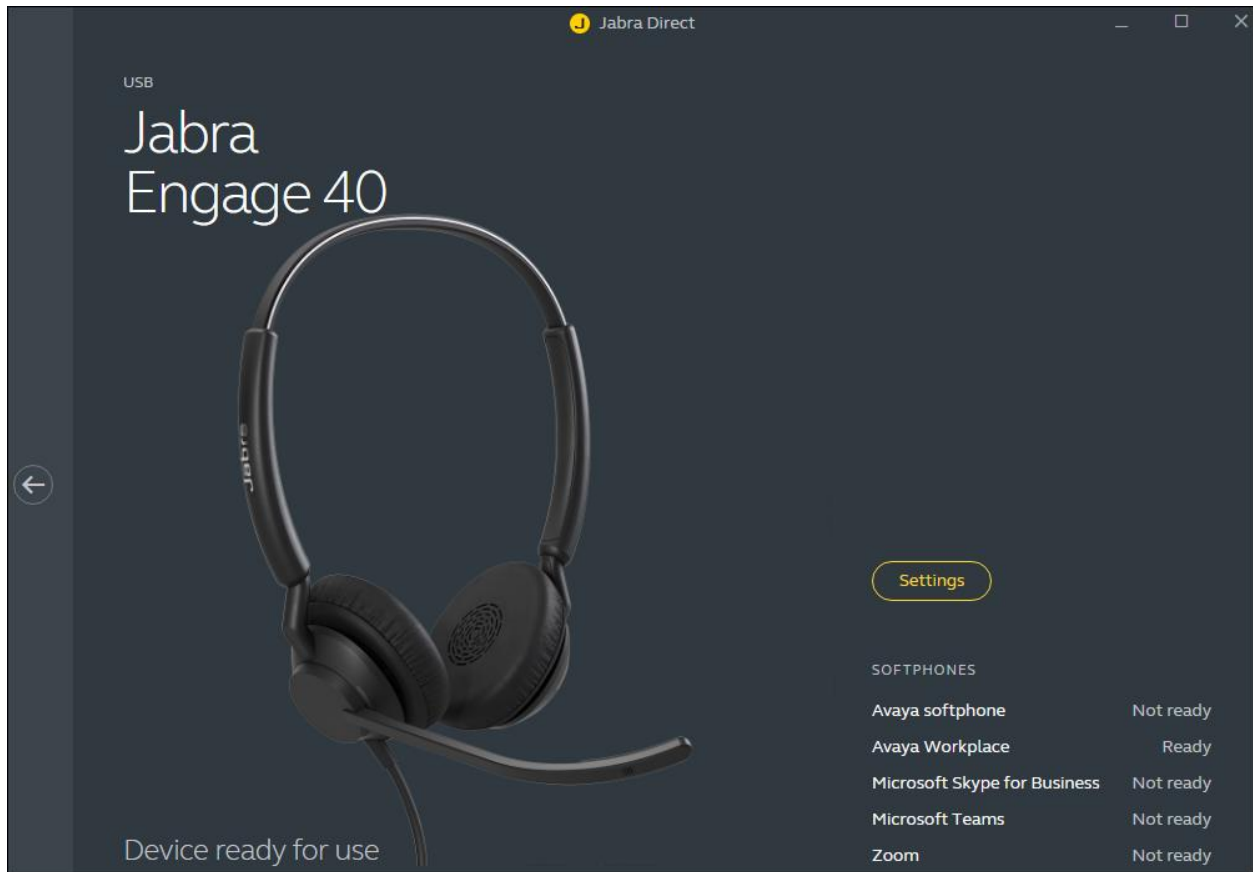


8. Verification Steps

This section provides steps to verify that the Jabra solution has been successfully integrated with Avaya Workplace.

8.1. Initialization

Open Avaya Workplace and log in. Once logged in, open Jabra Direct. Select the Device icon on the left side of the window (not shown). Click on the *Jabra Engage 40* image. The softphones should show *Ready* for **Avaya Workplace**.



8.2. Call Control

Calling using Avaya Workplace or Engage 40 (Inline Link) UC controls should function.

- Make calls from and to Avaya Workplace and verify two-way audio using Engage 40 (Inline Link) UC headset.
- Make a call to Engage 40 (Inline Link) UC and verify the call can be answered and dropped using the Inline Link controls.
- Make a call and verify mute can be initiated from the Inline Link controls.
- Make a call and verify Avaya Workplace puts the caller on and off hold when initiated from the Inline Link controls.

9. Conclusion

These Application Notes describe the configuration steps required to integrate Jabra Engage 40 (Inline Link) UC Stereo/Mono USB-A/USB-C headset and Jabra Direct for Windows with Avaya Workplace Client for Windows. All test cases passed.

10. Additional References

This section references the Avaya and Jabra documentation that are relevant to these Application Notes.

The following Avaya product documentation can be found at <http://support.avaya.com>.

- [1] *Administering Avaya Aura® Communication Manager*, Release 10.1, Issue 1, December 2021.
- [2] *Administering Avaya Aura® Session Manager*, Release 10.1.x, Issue 3, April 2022.
- [3] *Planning for and Administering Avaya Workplace Client for Android, iOS, Mac, and Windows*.
- [4] *Using Avaya Workplace Client for Android, iOS, Mac, and Windows*.

The following Jabra documentation can be found at <http://www.jabra.com>.

- [5] *Jabra Engage 40 User Manual*.

©2022 Avaya Inc. All Rights Reserved.

Avaya and the Avaya Logo are trademarks of Avaya Inc. All trademarks identified by ® and ™ are registered trademarks or trademarks, respectively, of Avaya Inc. All other trademarks are the property of their respective owners. The information provided in these Application Notes is subject to change without notice. The configurations, technical data, and recommendations provided in these Application Notes are believed to be accurate and dependable but are presented without express or implied warranty. Users are responsible for their application of any products specified in these Application Notes.

Please e-mail any questions or comments pertaining to these Application Notes along with the full title name and filename, located in the lower right corner, directly to the Avaya DevConnect Program at devconnect@avaya.com.

ATTACHMENT 1



Jabra Evolve 40 UC -Declaration of Similarity

September 23,22

It is hereby declared that the:

Jabra Engage 40 UC headset is available in Stereo and Mono versions and each version is also available with either USB-A or USB-C connectivity. Users can choose versions with built-in (inline) controllers or choose to have headsets without controls. The versions with controllers are identified as "Inline Link" in the product descriptions.

Jabra Engage 40 UC headset support USB connection to a PC running a soft client such as Avaya Workplace Client for Windows. The Engage 40 UC has LED light for indication of, including incoming call, answer, end, and mute. This functionality is the same when connected to the Engage 40 UC Stereo and Mono.

The Engage 40 UC Stereo and Mono headsets use identical firmware.

A handwritten signature in black ink, appearing to read "Innocent Bohui", written over a faint horizontal line.

Innocent Bohui | Partner Certification Engineer | GN Audio A/S