



Avaya Solution & Interoperability Test Lab

Application Notes for Jabra PC Suite and Jabra Evolve 65 Headset with Avaya one-X® Agent - Issue 1.0

Abstract

These Application Notes describe the configuration steps required to integrate the Jabra PC Suite and Jabra Evolve 65 Headset with Avaya one-X® Agent. Jabra Evolve 65 Headset can be connected to the PC via a Jabra Link 360 Bluetooth Dongle or USB cable. In this compliance test, the Bluetooth Dongle will be used. The Jabra PC Suite is a collection of programs that enable remote call control with Jabra headsets and Avaya one-X® Agent. With a Jabra headset connected via the Jabra Link 360 Bluetooth Dongle plug into the USB interface on a PC, users can directly answer, end, mute/unmute calls and adjust volume using buttons on the Jabra headset.

Readers should pay attention to Section 2, in particular the scope of testing as outlined in Section 2.1 as well as any observations noted in Section 2.2, to ensure that their own use cases are adequately covered by this scope and results.

Information in these Application Notes has been obtained through DevConnect compliance testing and additional technical discussions. Testing was conducted via the DevConnect Program at the Avaya Solution and Interoperability Test Lab.

1. Introduction

The Jabra Evolve 65 Headset together with Jabra PC Suite software allow connection and call control with Avaya one-X® Agent (hereafter referred to as one-X Agent) via Bluetooth to a PC. The Jabra PC Suite is a collection of programs that enable remote call control with Jabra headsets and one-X Agent. With a Jabra headset connected via the Jabra Link 360 Bluetooth Dongle plug into the USB interface on a PC, users can directly answer, end, mute/unmute calls and adjust volume using button on the Jabra headset.

The Jabra PC Suite includes the following programs, which were exercised during the compliance testing:

- **Jabra Device Service:** This program runs in the background and monitors the Jabra Link 360 connected to the headsets. It enables the **Jabra Control Center** and the one-X Agent driver used to interact with the Jabra Link 360.
- **Jabra Control Center:** This program is used to configure the settings of the Jabra Link 360.

2. General Test Approach and Test Results

DevConnect Compliance Testing is conducted jointly by Avaya and DevConnect members. The jointly-defined test plan focuses on exercising APIs and/or standards-based interfaces pertinent to the interoperability of the tested products and their functionalities. DevConnect Compliance Testing is not intended to substitute full product performance or feature testing performed by DevConnect members, nor is it to be construed as an endorsement by Avaya of the suitability or completeness of a DevConnect member's solution.

Avaya's formal testing and Declaration of Conformity is provided only on the headsets/handsets that carry the Avaya brand or logo. Avaya may conduct testing of non-Avaya headset/handset to determine interoperability with Avaya phones. However, Avaya does not conduct the testing of non-Avaya headsets/handsets for: Acoustic Pressure, Safety, Hearing Aid Compliance, EMC regulations, or any other tests to ensure conformity with safety, audio quality, long-term reliability or any regulation requirements. As a result, Avaya makes no representations whether a particular non-Avaya headset will work with Avaya's telephones or with a different generation of the same Avaya telephone.

Since there is no industry standard for handset interfaces, different manufacturers utilize different handset/headset interfaces with their telephones. Therefore, any claim made by a headset vendor that its product is compatible with Avaya telephones does not equate to a guarantee that the headset will provide adequate safety protection or audio quality.

The interoperability compliance test included feature and serviceability testing. The feature testing focused on placing calls with one-X Agent, answering and ending calls using the call control button on the headset, and verifying two-way audio. The call types included calls to

voicemail, local extensions, and the PSTN. Local extension calls between Evolve 65 Headsets, call transfer and conference call are also tested.

The serviceability testing focused on verifying the usability of the Jabra headset solution after restarting the one-X Agent, restarting the PC, reconnecting the Jabra headset to the PC and moving the headset out of Bluetooth range.

2.1. Interoperability Compliance Testing

All test cases were performed manually. The following features were verified:

- Placing calls to the voicemail system. Voice messages were recorded and played back to verify that the playback volume and recording level were good.
- Placing calls to internal extensions to verify two-way audio.
- Placing calls to the PSTN to verify two-way audio.
- Answering and ending calls using the call control button on the Jabra headset and the soft button on one-X Agent.
- Using the soft button on one-X Agent to hold and un-hold the audio.
- Using the volume control buttons on the Jabra headset to adjust the audio volume.
- Using the voice control button on the Jabra headset and the soft button on one-X Agent to mute and un-mute the audio.
- Verifying incoming call notification on Jabra headset.
- Verifying call ended notification on Jabra headset.

The serviceability testing focused on verifying the usability of the Jabra headset solution after restarting the one-X Agent, restarting the PC, reconnecting the Bluetooth Dongle to the PC and moving the headset out of Bluetooth range.

2.2. Test Results

All test cases passed successfully.

2.3. Support

For support on this Jabra headset solution, contact Jabra Technical Support at:

- Phone: +1-866-697-8757
- Website: <http://www.jabra.com/Support>
- Email: JabraSupport.US@jabra.com

3. Reference Configuration

Figure 1 illustrates the test configuration used to verify the Jabra PC Suite and Jabra Evolve 65 Headset solution. The configuration consists of an Avaya S8300D Server running Avaya Aura® Communication Manager with an Avaya G450 Media Gateway providing connectivity to the PSTN via an ISDN-PRI trunk. Avaya Aura® Messaging was used as the voicemail system. The Jabra PC Suite software was installed on the PC. The Jabra headsets are connected wirelessly via the Jabra Link 360 Bluetooth Dongle to the PC.

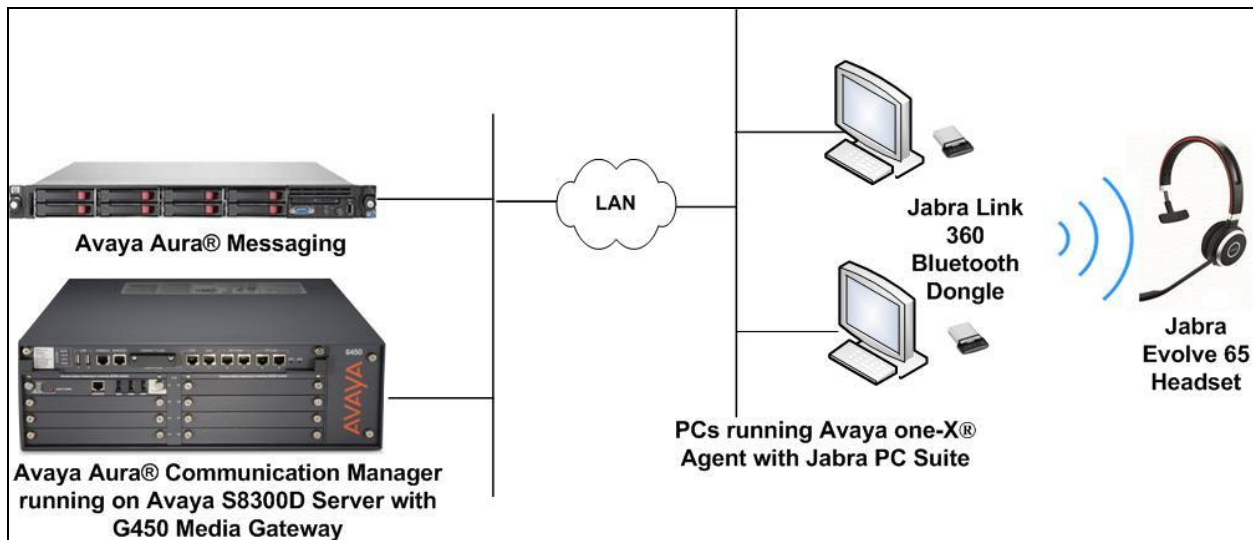


Figure 1: Test Configuration

4. Equipment and Software Validated

The following equipment and software were used for the sample configuration provided.

Equipment/Software	Release/Version
Avaya Aura® Communication Manager running Avaya S8300D Server with a G450 Media Gateway	R6.3.7 (R016x.03.0.124.0-21754)
Avaya Aura® Messaging	R6.3.1 (6.3.124.321-1.251259)
Avaya one-X® Agent running on a PC with Windows 7 Professional Service Pack 1	2.5.50022.0
Jabra PC Suite running on a PC with Windows 7 Professional Service Pack 1	2.15.8937.0 with 2.2.14.0 driver for one-X Agent
Jabra Evolve 65 headset with Jabra Link 360 Bluetooth Dongle	1.22.0

5. Configure Avaya Aura® Communication Manager

This section covers the station configuration for one-X Agent. The configuration is performed via the System Access Terminal (SAT) on Communication Manager.

Use the **add station** command to create a station for one-X Agent. Set the **Type** field to the station type to be emulated. In this example, *9641G* was used. Set the **Port** field to *IP* and configure a **Security Code**, which will be used as the password by one-X Agent to log in. Set the **IP Softphone** field to *y*.

```
add station 10003                                     Page 1 of 5

                                STATION

Extension: 10003                                Lock Messages? n                BCC: 0
Type: 9641G                                     Security Code: 111222          TN: 1
Port: S00005                                Coverage Path 1:                COR: 1
Name: one-X Agent                            Coverage Path 2:                COS: 1
                                           Hunt-to Station:                Tests? y

STATION OPTIONS

Location:                                     Time of Day Lock Table:
Loss Group: 19                               Personalized Ringing Pattern: 1
                                           Message Lamp Ext: 10003
Speakerphone: 2-way                          Mute Button Enabled? y
Display Language: english                    Button Modules: 0
Survivable GK Node Name:                     Media Complex Ext:
Survivable COR: internal                      IP SoftPhone? y
Survivable Trunk Dest? y                     IP Video Softphone? n
                                           Short/Prefixed Registration Allowed: default

                                           Customizable Labels? y
```

On **Page 4** of the Station form, configure the additional feature buttons shown in bold, which are used by one-X Agent to log in as an Automatic Call Distribution (ACD) agent.

```
add station 10003                                     Page 4 of 5

                                STATION


SITE DATA
Room:                                         Headset? n
Jack:                                         Speaker? n
Cable:                                         Mounting: d
Floor:                                         Cord Length: 0
Building:                                     Set Color:

ABBREVIATED DIALING
List1: system                               List2:                           List3:

BUTTON ASSIGNMENTS
1: call-appr                                5: abrv-dial   List: 1 DC: 01
2: call-appr                                6: abrv-dial   List: 1 DC: 02
3: call-appr                                7: auto-in      Grp:
4:                                           8: aux-work    RC:      Grp:

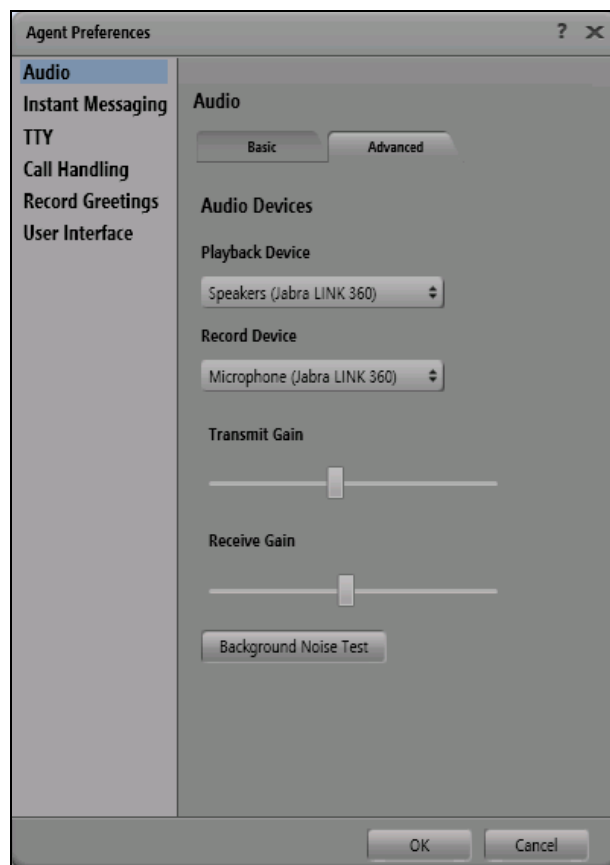
voice-mail 10000
```

6. Configure Avaya one-X® Agent

Before configuring the one-X Agent, the headset has to be configured and provisioned as in **Section 7** first. After logging into one-X Agent, click on  and then select **Agent Preferences** as shown below.



In the **Agent Preferences** window, click on **Audio** and then select the **Advanced** tab as shown below. Check that **Playback Device** and **Record Device** fields display *Jabra LINK 360*.



7. Configure Jabra Evolve 65 Headset solution

This section covers the steps to integrate Jabra headsets with one-X Agent, including:

- Installing the Jabra PC Suite software
- Connect the Jabra Headset
- Configuring Jabra PC Suite

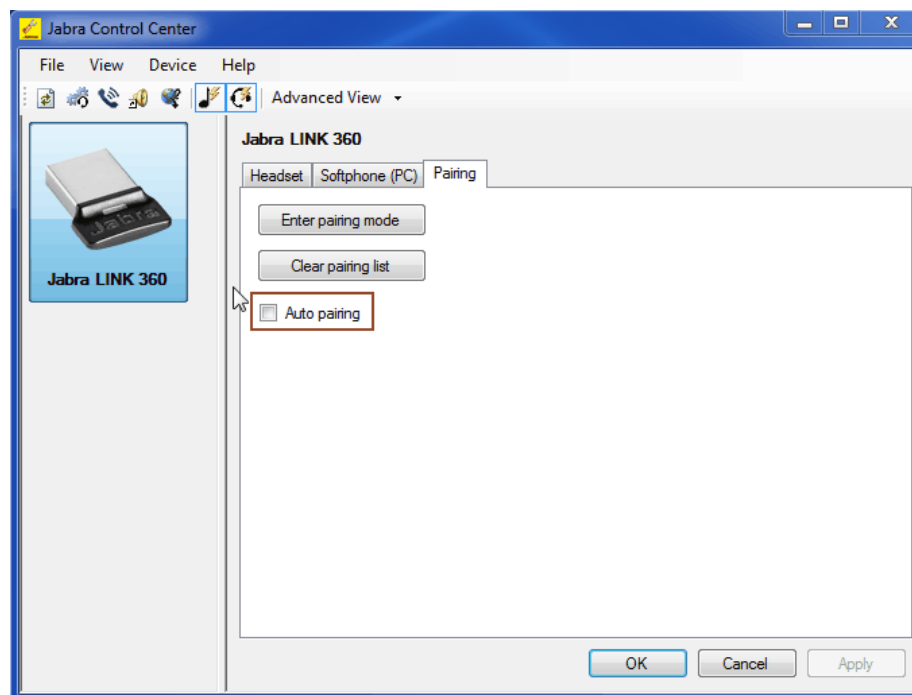
Note: After successfully performing this procedure, the Jabra headset will be detected in one-X Agent as described in **Section 6**.

7.1. Installing the Jabra PC Suite Software

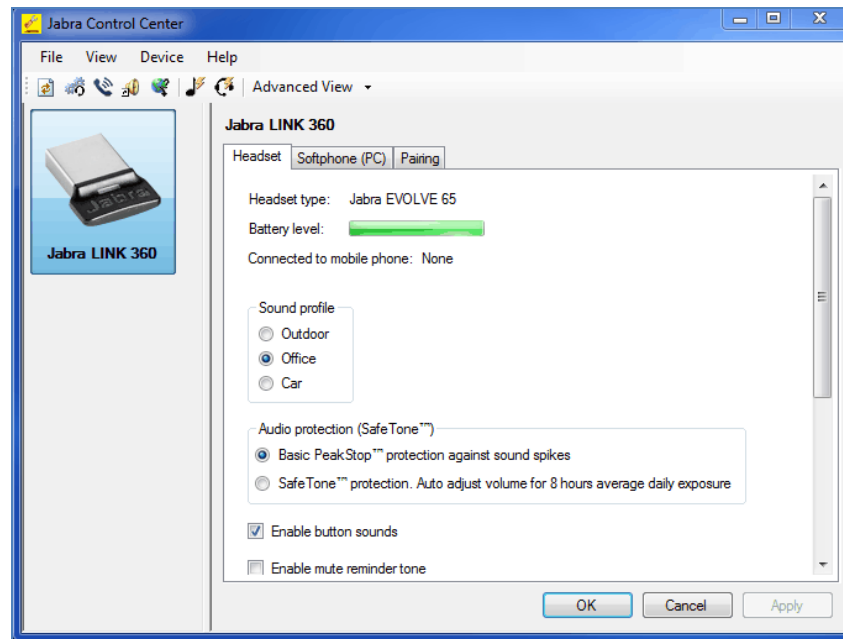
The installation instructions for Jabra PC Suite with one-X Agent PC are described in [3] listed **Section 10**.

7.2. Connect the Jabra Headset

Plug the Jabra Link 360 Bluetooth dongle to the USB port of the PC. The device drivers will automatically be installed. Pair the Jabra Evolve 65 Headset to the Jabra Link 360 using the Jabra Control Center software which is part of the Jabra PC Suite. Select **Advanced View** and click on the **Pairing** tab. Click on **Clear pairing list** and then **Enter pairing mode**. Check on the **Auto pairing** in order that pairing will be automatically done the next time the headset Bluetooth pairing is turn on.

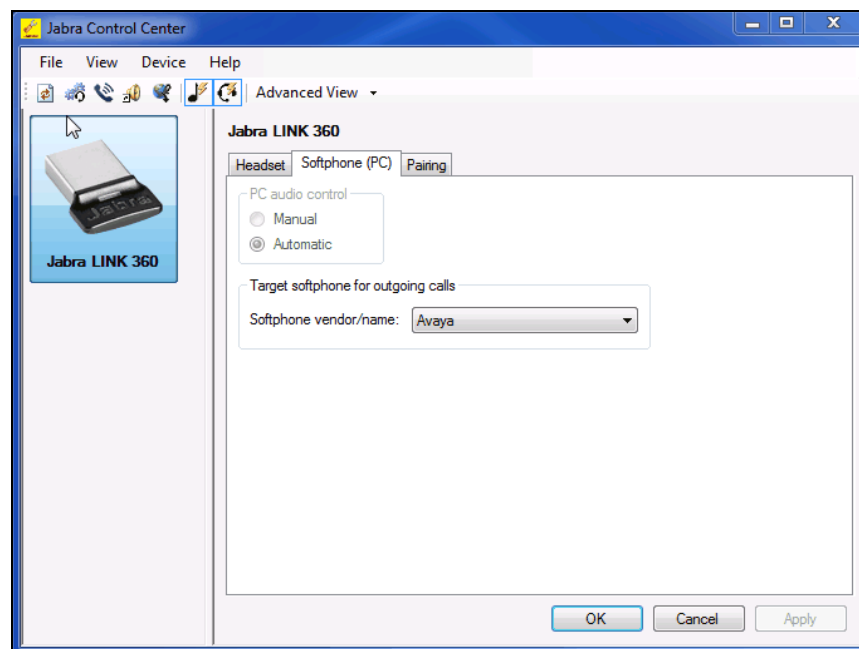


Once the Jabra Link 360 is paired with the headset, you can see the headset battery level is indicated. Other parameters regarding the headset can be set here too.



7.3. Configuring Jabra PC Suite

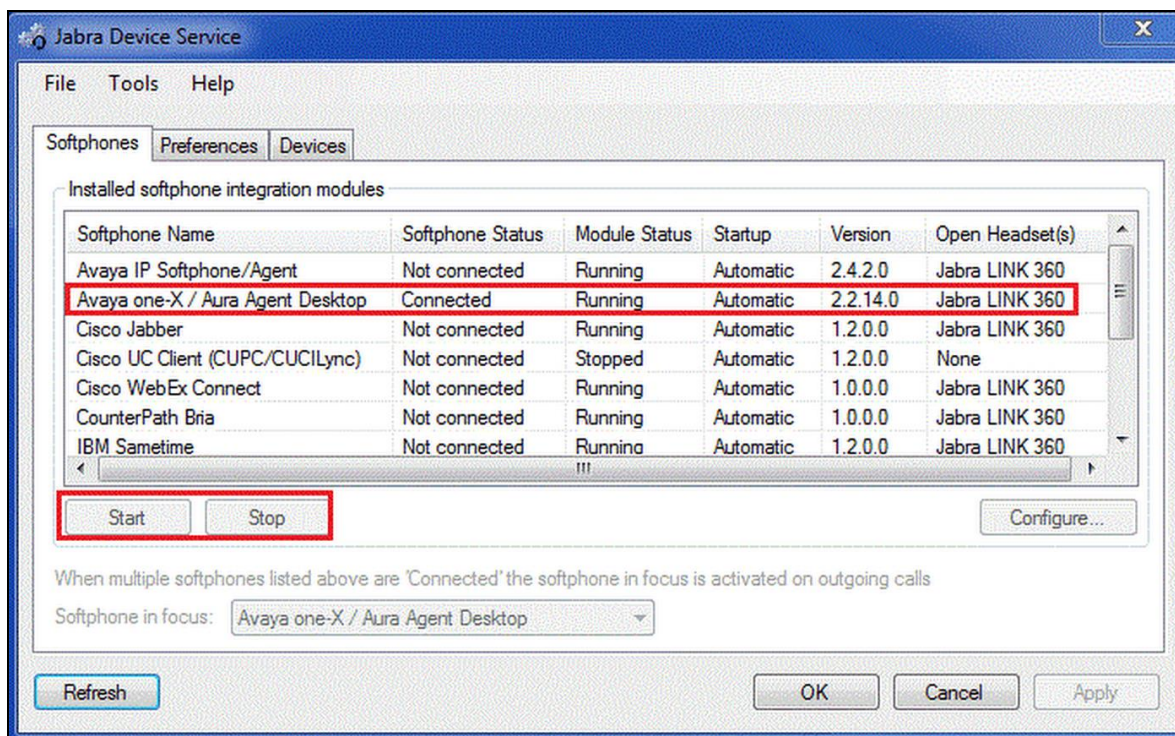
Launch the **Jabra Control Center** and select the **Softphone (PC)** tab. Click on *Automatic* for **PC audio control**. The **Target softphone for outgoing calls** field will automatically detect the **Softphone vendor/name** as *Avaya* shown below. Click **OK**.



8. Verification Steps

This section verifies that the Jabra solution has been successfully integrated with one-X Agent PC.

1. Verify that the Jabra headset has been successfully connected for use with one-X Agent. From the **Jabra Device Service** program, select the **Softphones** tab. Verify that:
 - **Softphone Status** associated with Avaya one-X is “**Connected**”.
 - **Module Status** is “**Running**”.
 - **Open Headset(s)** is “**Jabra LINK 360**”.



2. If the Jabra headset buttons is not functioning, restart the service. Select **Avaya one-X/ Aura Agent Desktop**; click **Stop** and then **Start**.
3. Once the Jabra headset is connected to one-X Agent, verify that incoming and outgoing calls can be established with two-way audio to the headset. For incoming calls, answer the call by pressing the call control button on the headset.
4. End the call by pressing the call control button on the headset.

9. Conclusion

These Application Notes describe the configuration steps required to integrate Jabra PC Suite and Jabra Evolve 65 Headset with Avaya one-X® Agent. All test cases were completed successfully.

10. Additional References

This section references the Avaya and Jabra documentation that are relevant to these Application Notes.

The following Avaya product documentation can be found at <http://support.avaya.com>.

[1] *Administering Avaya Aura™ Communication Manager*, Release 6.3, Issue 10.0, June 2014, Document Number 03-300509.

[2] *Using Avaya one-X® Agent, Release 2.5.4 (H.323)*, Issue 1.0, December 2013.

The following Jabra documentation can be found at <http://www.jabra.com>.

[3] *Installing Jabra PC Suite*.

[4] *Jabra Evolve 65 user manual*.

©2014 Avaya Inc. All Rights Reserved.

Avaya and the Avaya Logo are trademarks of Avaya Inc. All trademarks identified by ® and ™ are registered trademarks or trademarks, respectively, of Avaya Inc. All other trademarks are the property of their respective owners. The information provided in these Application Notes is subject to change without notice. The configurations, technical data, and recommendations provided in these Application Notes are believed to be accurate and dependable, but are presented without express or implied warranty. Users are responsible for their application of any products specified in these Application Notes.

Please e-mail any questions or comments pertaining to these Application Notes along with the full title name and filename, located in the lower right corner, directly to the Avaya DevConnect Program at devconnect@avaya.com.