



Application Notes for Configuring Sennheiser Communications A/S BTD 800 USB Dongle, HeadSetup software and MB Pro Series Headsets with Avaya Communicator for Windows 2.1 - Issue 1.0

Abstract

These Application Notes describe the configuration steps required to integrate the Sennheiser Communications A/S BTD 800 USB Dongle, HeadSetup software and MB Pro Series Headsets with Avaya Communicator for Windows 2.1. The HeadSetup is a collection of programs that enable remote call control with Sennheiser headsets and Avaya Communicator for Windows. With Sennheiser MB Pro Series Headsets connected via Bluetooth BTD 800 USB dongle on a PC, users can answer, end, mute/unmute, hold/resume and adjust volume using buttons on the MB Pro Series Headsets device.

Readers should pay attention to **Section 2**, in particular the scope of testing as outlined in **Section 2.1** as well as any observations noted in **Section 2.2**, to ensure that their own use cases are adequately covered by this scope and results.

Information in these Application Notes has been obtained through DevConnect compliance testing and additional technical discussions. Testing was conducted via the DevConnect Program at the Avaya Solution and Interoperability Test Lab.

1. Introduction

The Sennheiser Communications A/S MB Pro Series Headsets together with HeadSetup software allow connection and call control with Avaya Communicator for Windows 2.1 (hereafter referred to as Avaya Communicator) via Bluetooth BTD 800 USB dongle on a PC. The HeadSetup is a collection of programs that enable remote call control with MB Pro Series Headsets and Avaya Communicator. With Sennheiser MB Pro Series Headsets, users can answer, end, mute/unmute, hold/resume and adjust volume using buttons on the MB Pro Series Headsets device.

2. General Test Approach and Test Results

The interoperability compliance test included feature and serviceability testing. The feature testing focused on placing calls with Avaya Communicator, answering and ending calls using the call control button on the headset, and verifying two-way audio. The call types included calls to voicemail, local extensions, and the PSTN.

The serviceability testing focused on verifying the usability of the Sennheiser headset solution after restarting the Avaya Communicator, restarting the PC, moving a distance away from PC to lose Bluetooth connectivity and reconnecting the headset to the PC.

DevConnect Compliance Testing is conducted jointly by Avaya and DevConnect members. The jointly-defined test plan focuses on exercising APIs and/or standards-based interfaces pertinent to the interoperability of the tested products and their functionalities. DevConnect Compliance Testing is not intended to substitute full product performance or feature testing performed by DevConnect members, nor is it to be construed as an endorsement by Avaya of the suitability or completeness of a DevConnect member's solution.

Avaya's formal testing and Declaration of Conformity is provided only on the headsets/handsets that carry the Avaya brand or logo. Avaya may conduct testing of non-Avaya headset/handset to determine interoperability with Avaya phones. However, Avaya does not conduct the testing of non-Avaya headsets/handsets for: Acoustic Pressure, Safety, Hearing Aid Compliance, EMC regulations, or any other tests to ensure conformity with safety, audio quality, long-term reliability or any regulation requirements. As a result, Avaya makes no representations whether a particular non-Avaya headset will work with Avaya's telephones or with a different generation of the same Avaya telephone.

Since there is no industry standard for handset interfaces, different manufacturers utilize different handset/headset interfaces with their telephones. Therefore, any claim made by a headset vendor that its product is compatible with Avaya telephones does not equate to a guarantee that the headset will provide adequate safety protection or audio quality.

2.1. Interoperability Compliance Testing

All test cases were performed manually. The following features were verified:

- Placing calls to the voicemail system. Voice messages were recorded and played back to verify that the playback volume and recording level were good.
- Placing calls to internal extensions to verify two-way audio.
- Placing calls to the PSTN to verify two-way audio.
- Answering and ending calls using the call control button on the headset and the soft button on Avaya Communicator.
- Using the soft button on Avaya Communicator and the call control button on the headset to hold and un-hold the audio.
- Using the volume control buttons on the headset to adjust the audio volume.
- Using the voice control button on the headset and the soft button on Avaya Communicator to mute and un-mute the audio.
- Using the call control button on the headset to reject or redial a call.
- Verifying incoming call notification on headset.
- Verifying call ended notification on headset.

The serviceability testing focused on verifying the usability of the Sennheiser headset solution after restarting the Avaya Communicator, moving a distance away from PC to lose Bluetooth connectivity and restarting the PC and reconnecting the headset to the PC.

2.2. Test Results

Redial feature of the Sennheiser device are not supported as Avaya headset API does not provide this functionality. All other test cases are successfully completed.

2.3. Support

For support on the Sennheiser Communications A/S headset solution, contact Sennheiser Communications A/S technical support at:

Website: <http://en-de.sennheiser.com/service-support/>

Phone: +1-866-697-8757

3. Reference Configuration

Figure 1 illustrates the test configuration used to verify Sennheiser HeadSetup software with Bluetooth BT-D 800 and MB Pro Series Headsets solution. The configuration consists of an Avaya S8300D Server running Avaya Aura® Communication Manager with an Avaya G450 Media Gateway providing connectivity to the simulated PSTN via an ISDN-PRI trunk. Avaya Aura® Messaging was used as the voicemail system. The Sennheiser HeadSetup software was installed on the PC. The MB Pro Series headsets are connected via the Bluetooth BT-D 800 plug into the USB interface on the PC.

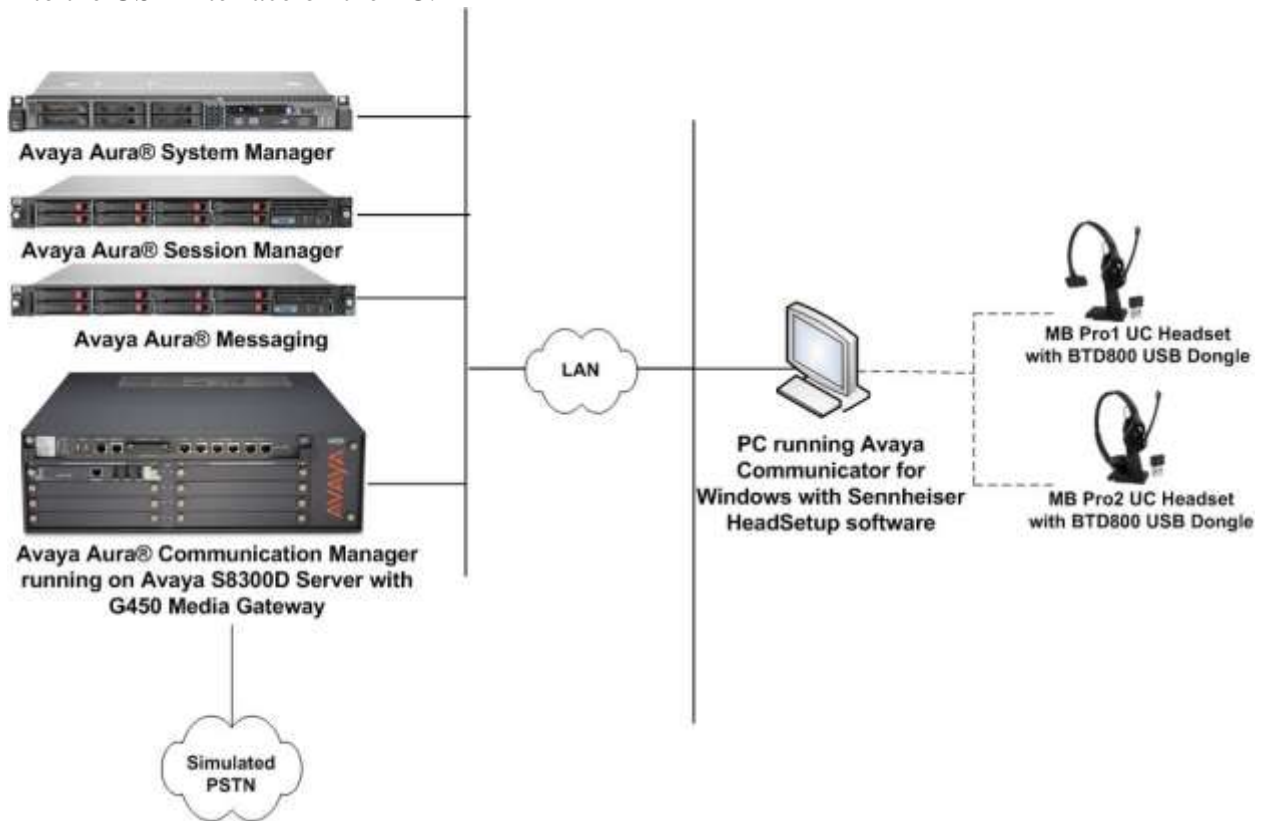


Figure 1: Test Configuration

4. Equipment and Software Validated

The following equipment and software were used for the sample configuration provided.

Equipment/Software	Release/Version
Avaya Aura® Communication Manager running Avaya S8300D Server with a G450 Media Gateway	6.3.9.1 (Build R016x.03.0.124.0-22098)
Avaya Aura® System Manager	6.3.12 (6.3.12.9.3022)
Avaya Aura® Session Manager	6.3.12 (6.3.12.0.631208)
Avaya Aura® Messaging	6.3.124.321-1.251259
Avaya Communicator for Windows running on Windows 7 Professional Service Pack 1	2.1 (2.1.0.69)
Sennheiser HeadSetup software	V3.0.4
Sennheiser MB Pro1 UC headset	1.1.2.0
Sennheiser MB Pro 2 UC headset	1.1.2.0
BTD 800 Bluetooth dongle	1.0.22.0

5. Configure Avaya Aura® Communication Manager


This section covers the station configuration for Avaya Communicator. The configuration is performed via the System Access Terminal (SAT) on Communication Manager.

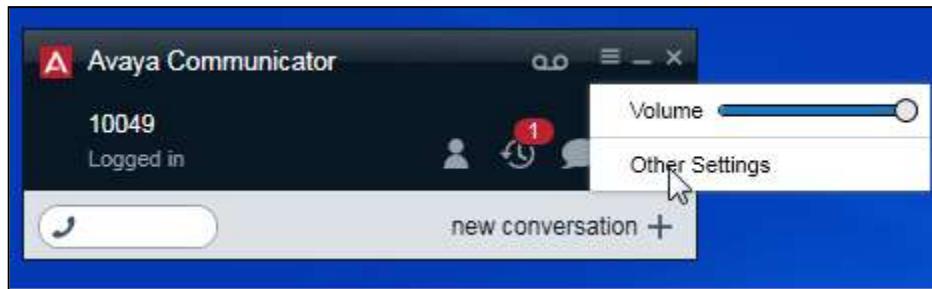
5.1. Configure SIP station

The configuration for SIP station is performed partially via the System Access Terminal (SAT) on Communication Manager. The rest of the configurations are performed via the System Manager. There is an option to generate SIP station without using the SAT when adding a new SIP user using System Manager. The details will not be covered in this document. Please refer to the application notes in [3] for details. Below shows the SIP Station with **Type 9641SIP** configured.

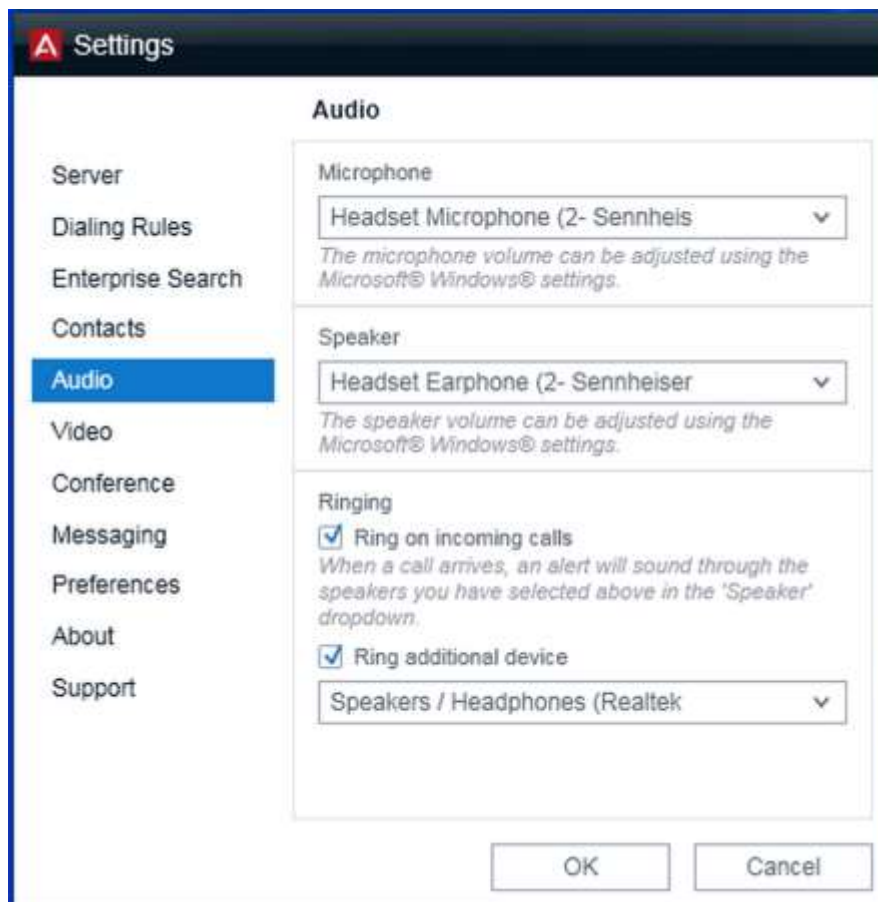
```
display station 10049                                     Page 1 of 6
                                                         STATION
Extension: 10049                                         Lock Messages? n          BCC: 0
  Type: 9641SIP                                         Security Code:           TN: 1
  Port: S00138                                           Coverage Path 1:        COR: 1
  Name: AVAYA, SIP3                                       Coverage Path 2:        COS: 1
                                                         Hunt-to Station:
STATION OPTIONS
  Location:                                               Time of Day Lock Table:
  Loss Group: 19                                         Message Lamp Ext: 10049
  Display Language: english                               Button Modules: 0
  Survivable COR: internal
  Survivable Trunk Dest? y                               IP SoftPhone? n
                                                         IP Video? n
```

6. Configure Avaya Communicator for Windows

Before configuring the Avaya Communicator, the headset has to be configured and provisioned as detailed in **Section 7**. After logging into Avaya Communicator, select  → **Other Settings** → **General Settings** as shown below



Check that the device *Headset Microphone (2-Sennheiser)* is detected under the **Microphone** and *Headset Earphone (2-Sennheiser)* is detected under the the **Speaker** fields from the **Audio** settings on the left panel. Otherwise, select it manually from the drop down menu respectively.



7. Configure Sennheiser MB Pro Series Headsets solution

This section covers the steps to integrate Sennheiser headsets with Avaya Communicator, including:

- Installing the Sennheiser HeadSetup software
- Configuring HeadSetup software
- Connect Sennheiser MB Pro Series Headsets

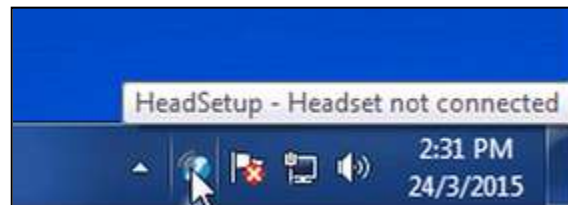
Note: After successfully performing this procedure, the headset may not be detected in the **Audio** Settings of Avaya Communicator. Manual selection may be required as described in **Section 6**.

7.1. Installing the Sennheiser HeadSetup software

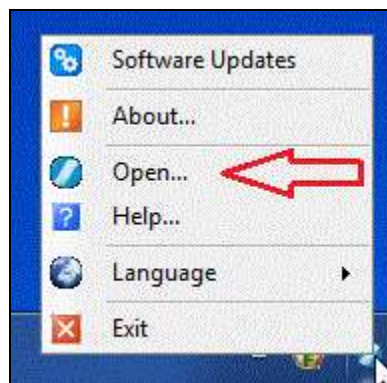
The installation instructions for Sennheiser HeadSetup software on the Avaya Communicator PC is described in [4] listed in **Section 10**.

7.2. Configuring HeadSetup software

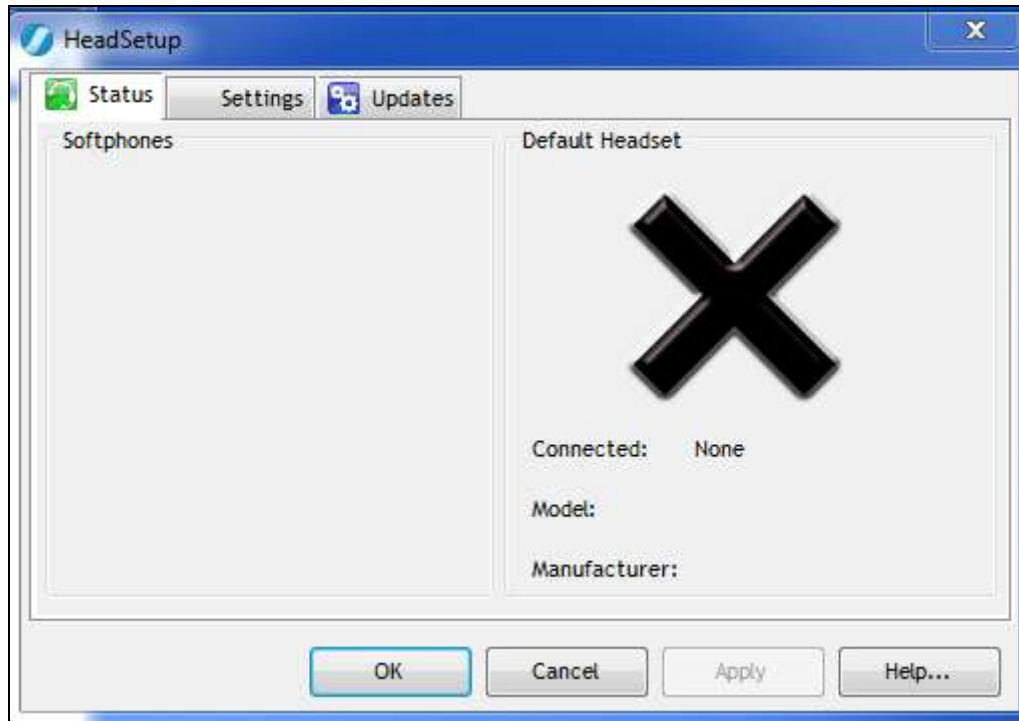
Launch the **HeadSetup** icon from the desktop. Hover the mouse over the HeadSetup icon on bottom right taskbar and that it shows “**HeadSetup – Headset not connected**”.



Right Click on the HeadSetup application icon at the bottom right taskbar and select **Open**.



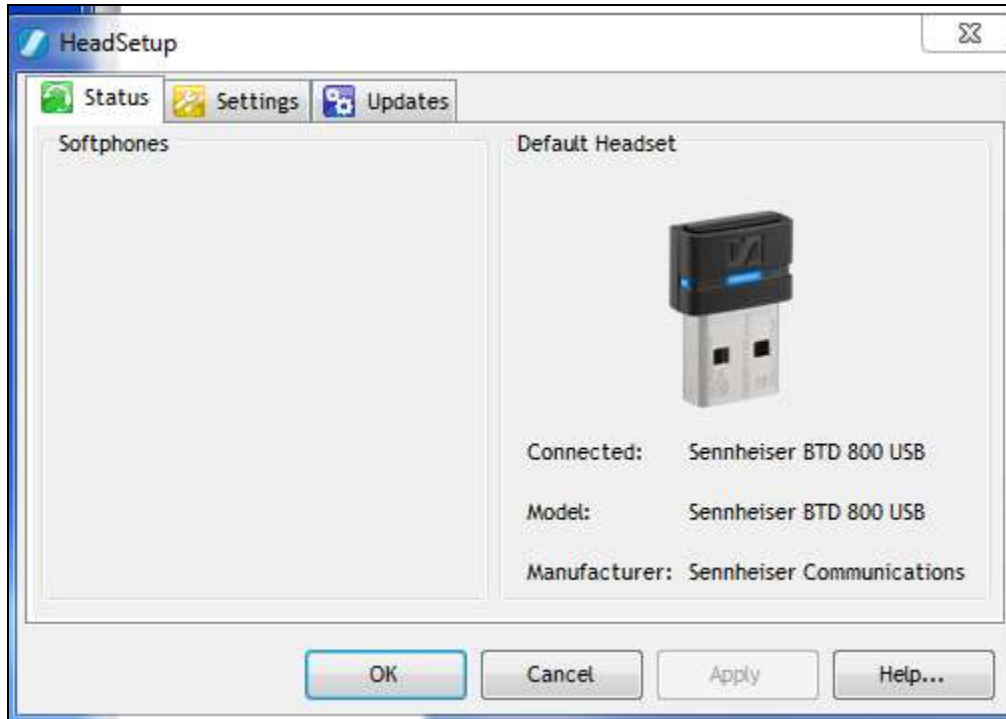
Select the **Status** tab and **Default Headset** on the right pane shows no headset is detected with an **X**.



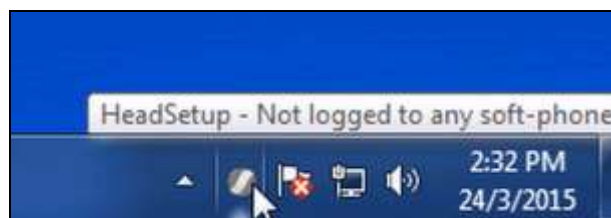
7.3. Connect Sennheiser MB Pro Series Headsets

Plug Sennheiser BTD 800 Bluetooth dongle into USB port of PC. The device drivers will automatically be installed once plugged into the PC. Setup MB Pro Series Headsets Bluetooth connection to Bluetooth dongle. The setup instructions is described in the headset user manual [5] listed in **Section 10**.

The HeadSetup software **Status tab** shows the **Sennheiser BTD 800 USB** is detected.



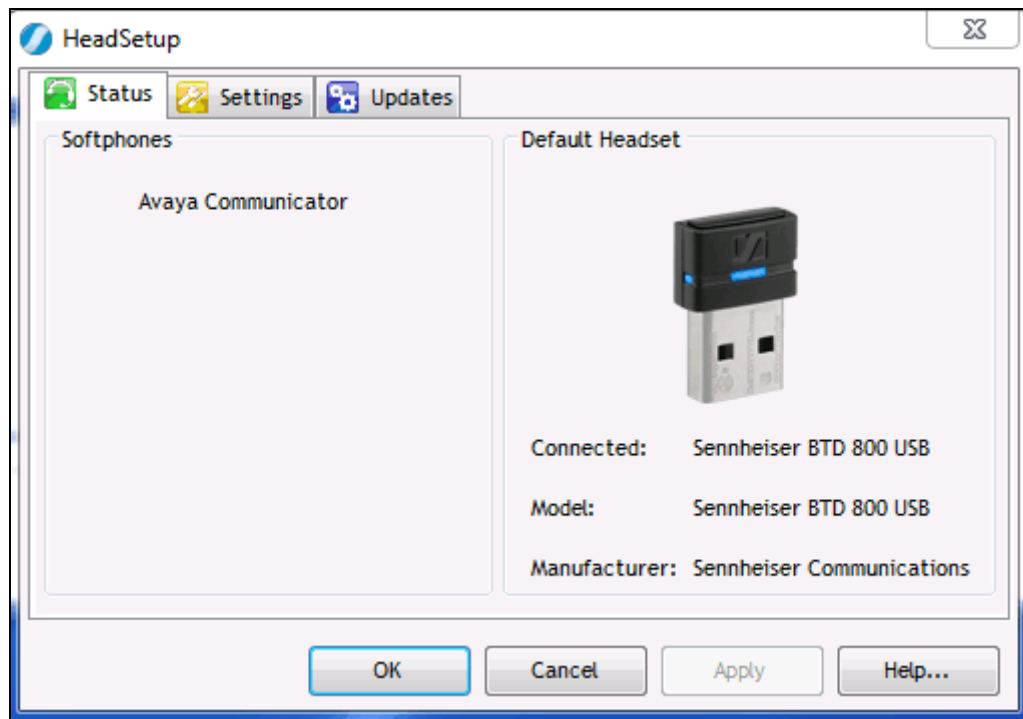
Hover the mouse over the HeadSetup icon (in grey) on bottom right taskbar and it shows “HeadSetup – Not logged to any soft-phone”.



8. Verification Steps

This section verifies that the headset solution has been successfully integrated with the Avaya Communicator. Launch and log in to Avaya Communicator.

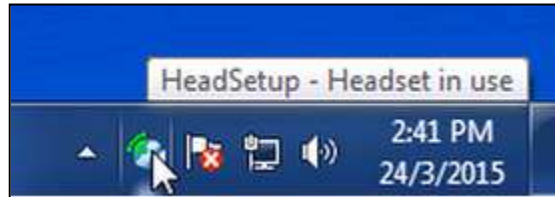
1. Verify that the Sennheiser headset has been successfully connected for use with Avaya Communicator. From the **HeadSetup** program, select the **Status** tab. Verify that:
 - The **Softphones** on the left pane shows **Avaya Communicator**.
 - The **Default Headset** on the right pane shows the **Sennheiser BTD 800 USB**.



2. Hover the mouse over the HeadSetup icon (in green) on bottom right taskbar and it shows “HeadSetup – Headset Idle”.



3. Once the headset is connected to Avaya Communicator, verify that incoming and outgoing calls can be established with two-way audio to the headset. Hover the mouse over the HeadSetup icon on bottom right taskbar and it shows “**HeadSetup – Headset in use**”. If the headset call control buttons is not functioning, restart the connection by closing and opening the HeadSetup application.



4. For incoming calls, answer the call by pressing the call control button on the headset.
5. End the call by pressing the call control button on the headset.

9. Conclusion

These Application Notes describe the configuration steps required to integrate Sennheiser Communications A/S BTD 800 USB Dongle, HeadSetup software and MB Pro Series Headsets with Avaya Communicator for Windows 2.1. All test cases were completed successfully with observations noted in **Section Error! Reference source not found.**

10. Additional References

This section references the Avaya and Sennheiser Communications A/S documentation that are relevant to these Application Notes.

The following Avaya product documentation can be found at <http://support.avaya.com>.

- [1] *Administering Avaya Aura® Communication Manager*, Release 6.3, Issue 10.0, June 2014, Document Number 03-300509.
- [2] *Administering Avaya Communicator for Android, iPad, iPhone, and Windows, Release 2.1 Issue 2, March 2015*.
- [3] *Application Notes for Configuring Avaya 9600 Series IP Deskphones running Avaya one-X® SIP firmware with Avaya Aura® Session Manager*.

The following Sennheiser Communications A/S documentation can be found at <http://en-http://de.sennheiser.com/>.

- [4] *Sennheiser Updater – Mass Deployment Installation Guide*.
- [5] *Sennheiser MB Pro 1 Pro 2 user manual*.
- [6] *Sennheiser MB Pro 1 Pro 2 quick guide*.

©2015 Avaya Inc. All Rights Reserved.

Avaya and the Avaya Logo are trademarks of Avaya Inc. All trademarks identified by ® and ™ are registered trademarks or trademarks, respectively, of Avaya Inc. All other trademarks are the property of their respective owners. The information provided in these Application Notes is subject to change without notice. The configurations, technical data, and recommendations provided in these Application Notes are believed to be accurate and dependable, but are presented without express or implied warranty. Users are responsible for their application of any products specified in these Application Notes.

Please e-mail any questions or comments pertaining to these Application Notes along with the full title name and filename, located in the lower right corner, directly to the Avaya DevConnect Program at devconnect@avaya.com.